

# Placer-Sierra Railroad Heritage Society

P.O. Box 1776

Colfax, CA 95713

May 2011 Newsletter

Apply  
U.S. Postage  
Here



[www.psrhs.org](http://www.psrhs.org)

To:

## Scheduled Events



May 21 Caboose Work Party 9am at the Colfax  
caboose (weather permitting)

May 25 Field Trip – Siemens Rail Car  
Manufacturing Facility,  
South Sacramento (details inside)  
(No Regular Meeting in May)

June 1 Caboose Work Party

June 4 Caboose Work Party

June 10-12 Dunsmuir Railroad Days

June 15 Caboose Work Party

June 18 Caboose Work Party

\*Check out our updated web site - [www.psrhs.org](http://www.psrhs.org)\*



## Monthly Meeting...

There will be **no meeting in May** due to the field trip to Siemens Rail Car Facility. The next PSRHS meeting will be held at 7:00 PM on **Thursday, June 23rd** in the Multi-purpose Senior Citizen Center at the Dewitt Complex in Auburn. .

# Placer-Sierra Railroad Heritage Society

## May 2011 Newsletter

**May 25 Field Trip.** In lieu of a May meeting, PSRHS has scheduled its spring field trip on Wednesday, May 25 to the Siemens Rail Car Manufacturing Facility in South Sacramento. PSRHS members will be given an exclusive plant tour of the Siemens manufacturing plant for light railcars and locomotives. Their railcars are used throughout the US and internationally.

The tour group size must be limited to 25 persons so PSRHS members attending this tour should email Jim Wood ASAP to reserve your place. Because of tour group size limitations, this trip is restricted to members only. The final attendance list for the tour will be sent to Siemens Security Staff on Monday, May 23.

Members should car pool if possible. Please meet in the Siemens visitor parking lot at **8:45 am** to assemble and enter the building as a group.

Siemens regrets that photography inside the manufacturing plant is not permitted.

The Siemens plant is at 7464 French Road, Sacramento, CA 95828. The most direct route to the plant is to take Hwy 99 south from Sacramento to the Florin Road exit, go east on Florin Road for 3 miles, and then south on French Road. Siemens is on the right.

RSVP to Jim at [greenstonemaker@gmail.com](mailto:greenstonemaker@gmail.com)

---

### April Meeting

Announcements/Updates: President Jim Wood.

- Membership renewals for 2011 are now due. \$20 individual member; \$25 family membership
- An October field trip is planned for the east side of the summit, in the area of Cold Stream Canyon.

Colfax Railroad Days October 1 & 2, 2011

- PSRHS will be sponsoring a number of events
- WP train will be coming from Portola
- Operation Lifesaver special event (in addition to the weekend appearance) will be held on Friday, Sept. 30 for local school children. OL is a nationwide, non-profit public information program



dedicated to reducing collisions, injuries and fatalities at highway-rail crossings.

- Train videos will be shown at the theater
- Chautauqua style symposium about railroading - historically, an education movement in the United States, highly popular in the late 19th and early 20th centuries. The Chautauqua brought entertainment and culture for the whole community, with speakers and presentations.
- Motorcar rides may/may not be available; has been a popular event at previous Colfax festivities.

Key to getting good turnout will be advertising Railroad Days and all its events. Plans are being made to organize the advertisements.

### April Program

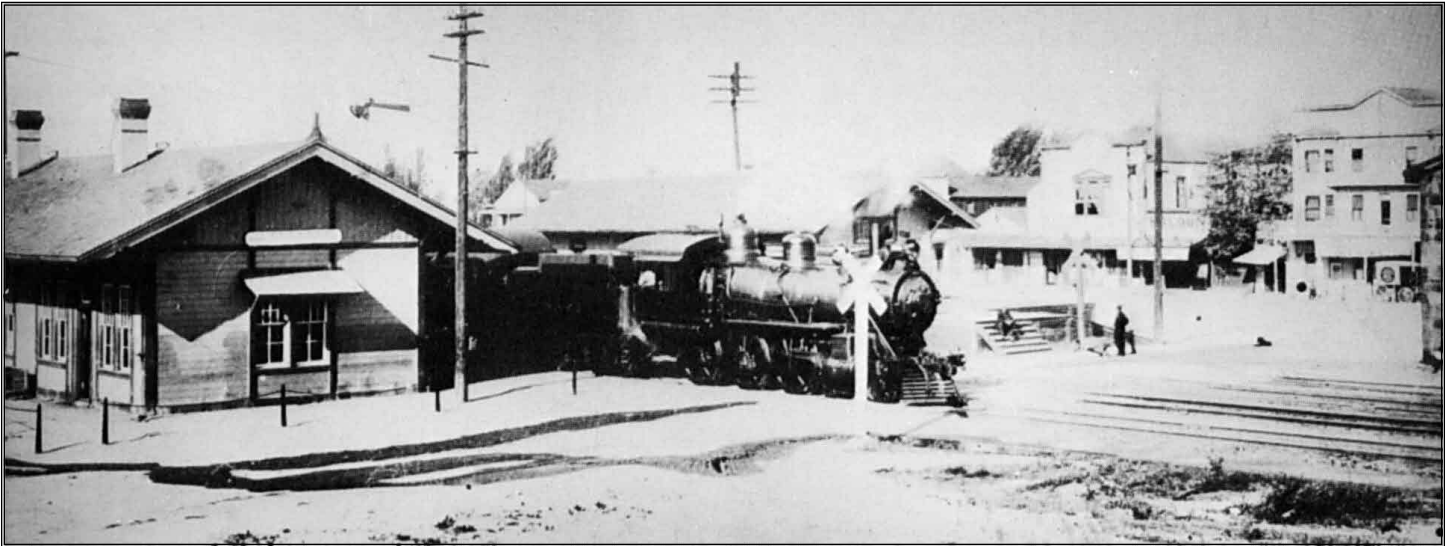
In keeping with the heavy snowfall in the Sierra this winter, this month's program featured member photos and video showing April snow removal on the Donner route. The rotary plows were brought out for the first time in over a decade to handle the monumental amounts of heavy snow, aka "Sierra cement". Many thanks to members Peter Hills, Dave Ferreira and Brendan Compton for the great views from the plow itself and from vantage points along the way. We all got a good feel for what is involved in the hard work of keeping the hill open with the remarkable snowfall this winter. *Shirley Belleville, Secretary*

\*Watch this fall for Brendan's new video on rotaries.\*

# Placer-Sierra Railroad Heritage Society

## May 2011 Newsletter

### FROM THE ARCHIVES



**May Mystery Photo:** This busy scene from the early 1900's is in one of the towns along the Donner Route. The station sign has been intentionally blanked out. Many of the buildings in this scene have been replaced or are no longer there, but this is still an active location on the railroad today. Where was the photo taken, and what is at this site today? *A.C. Phelps Collection*



**Last Month's Mystery Photo:** Problems on the Feather River route have forced this set of Western Pacific diesels and freight train onto the Donner Route. The road signs in this early 1940's Ken Yeo photo identify old Hwy 40 and Hwy 49 where they crossed under the westbound mainline in downtown Auburn. Hwy 49 still passes under the downhill tracks at this location before dropping into the American River canyon.

**CPRR/SP Donner Route Timeline:** CPRR engine #1, Governor Stanford, a 4-4-0, arrived by ship at Sacramento in October 1863. On Feb. 18, 1864, the Governor Stanford pulled an excursion train to end-of-track two miles west of Junction (renamed Roseville – mile 18). Guests rode on benches on open platform cars – passenger cars were being built but not yet ready for service. At Junction the Central Pacific connected with the California Central Railroad, building from Folsom toward Lincoln.

Please forward any comments, suggestions or information for inclusion in future issues of the newsletter. Next Issue Deadline – June 13  
Editor: Roger Staab, (530) 346-6722  
rsrr@exwire.com

**Membership Information** Individual Members = \$20.00/yr  
Family Membership = \$25.00/yr

- Monthly Newsletter
- Member Activities, Presentations and Field Trips
- Display and Restoration Projects

PSRHS, P.O. Box 1776, Colfax, CA 95713 [www.psrhs.org](http://www.psrhs.org)