

# Placer-Sierra Railroad Heritage Society

## September 2011 Newsletter

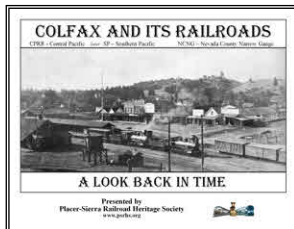


[www.psrhs.org](http://www.psrhs.org)



### In this issue:

**Colfax RR Days Update.** Colfax Railroad Days is nearly upon us. We'll look at final preparations for the Colfax event, scheduled for Sept. 30-Oct. 2, including planned venues, volunteer assignments, and status of fund-raising efforts. Jim Wood's Operation Lifesaver presentation at the September meeting will set the safety tone for our club's involvement in this celebration of our railroad heritage.



**New PSRHS Publications.** Two PSRHS publications will soon be available. Find out what these contain, how they might be useful to local railroad history buffs, and how you can obtain a copy.

## Scheduled Events



Sep 22 Monthly Meeting – Operation Lifesaver Presentation, Colfax RR Days Update and Final Plans

Sep 21 & 24 Colfax Caboose Work Party 9am (reorganizational meetings)

Sept 30 Colfax Railroad Days (for schools)

Oct 1-2 Colfax Railroad Days

Oct 5 & 8 Caboose Work Party

Oct 19 & 22 Caboose Work Party

Oct 15 Field Trip - Cold Stream area - meet at Colfax Freight Depot at 9AM  
Further details in October newsletter or on web site.  
(No meeting in October)

Check out our updated web site

[www.psrhs.org](http://www.psrhs.org)

# Placer-Sierra Railroad Heritage Society



## September 2011 Newsletter

### September 22 Meeting Presentations:

**Operation Lifesaver - Jim Wood** – With Colfax Railroad Days approaching, it is an ideal time to review safety issues near railroad tracks and crossings. Jim Wood will give his first ever "official" presentation as a newly trained Operation Lifesaver Presenter. OL is the organization that promotes and disseminates the railroad safety message to the public. Jim recently took the OL Presenter's class designed to train folks interested in delivering the railroad crossing safety message to various audiences such as Law Enforcement, First Responders (fire), schools and bus drivers, professional drivers, etc.

The OL program and its educational materials contain vital information for anyone who comes in contact with railroad tracks. PSRHS members certainly fall into this category and we hope members will plan to attend the presentation of this particularly pertinent topic.

**Colfax Railroad Days – Sept 30-Oct 2** – We will discuss final plans and volunteer assignments for staffing the various venues at Colfax Railroad Days.

### Colfax Railroad Days September Update

The switch that feeds the Suburban siding in Colfax will likely not be operational by Railroad Days, so UP has indicated that the Western Pacific Museum train from Portola will be located on a siding in the main yard just beyond the Fruit Sheds. The motorcar rides will be conducted on the Suburban spur, similar to last year's event.



Our club will be responsible for staffing the following venues at Railroad Days:

Friday, Saturday and Sunday:

- Ticket table for the WP train cars from Portola
- Motor car ride loading area
- Assisting Operation Lifesaver as needed

Saturday and Sunday

- NWP caboose
- Film fest at Colfax theater

Model train layouts, live steamers, railroad art displays, antique engines and the Transcontinental Chautauqua will all take place at the Sierra Vista Center. The parking lot behind the freight depot will have business booths on Saturday, and a car show on Sunday.

There will be displays in and near the passenger depot and a quilt show in downtown Colfax. Don't forget Brendan Compton's film fest of Donner railroading videos at the Colfax theater. Visit our web site, [www.psrhs.org](http://www.psrhs.org), for current information on the event and participants.

The Society's role in this year's event is substantially expanded with the addition of the Western Pacific train and the Friday Operation Lifesaver school education event. Therefore, it will be important that our group provide sufficient support and staff to ensure the event goes well and all the parties involved are pleased with the outcome. Please consider donating some of your time to support our Society's staffing tasks to make this event a resounding success. This will definitely be an exciting railroad event this year.

To volunteer for part of one day, or for all three days, please contact Jim Wood who will give you your assignment(s). Jim can be reached at 320-1276, or by email at [greenstonemaker@gmail.com](mailto:greenstonemaker@gmail.com)

Left – Colfax Railroad Days gives you the opportunity to sit in the cab of a diesel engine, view the inside of vintage railcars, and ride the motorized "speeders".

# Placer-Sierra Railroad Heritage Society

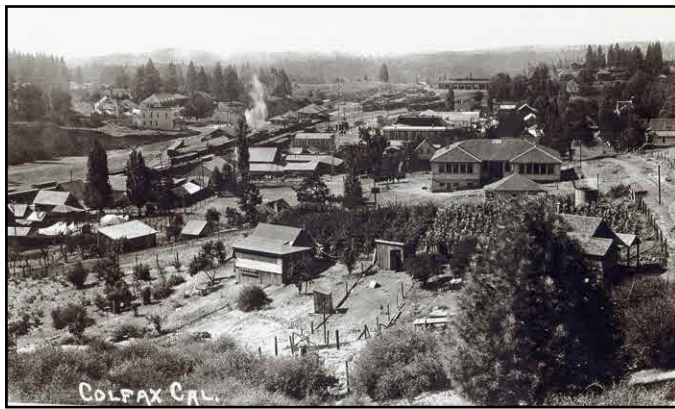
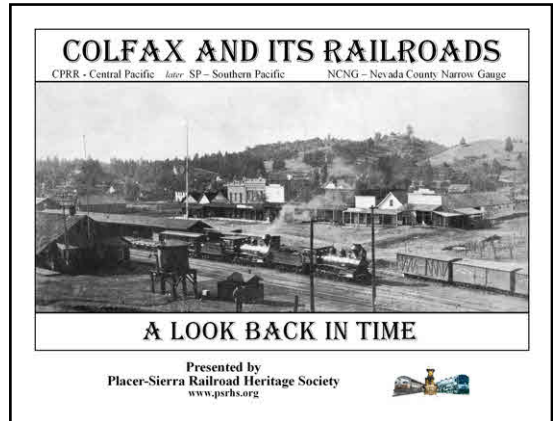
## September 2011 Newsletter



### New PSRHS Publications

#### Colfax and its Railroads – A Look Back in Time

As part of a presentation and tour to be offered to attendees of the Transcontinental Chautauqua at Colfax Railroad Days, Roger Staab has prepared an 8-page photo summary of the railroad-related changes that have taken place in Colfax over the years. The photos are arranged so a person can walk to four different locations in town, and see how the scene has changed over the years from each of those vantage points. This photo tour is available as a PDF file for PSRHS members. Hard copies will be printed and sold as a fundraiser for club activities..



The photo at left shows many of the changes that took place in Colfax during the double-tracking in 1911-15. The mainline tracks were realigned through town, which involved removing two major hillsides. The 9-stall engine house was completed, along with an extensive yard and wye track for turning engines.

This and other photos illustrate three major changes in track alignment and/or support buildings that took place from 1865, when the tracks originally reached town, through the 1940's and 1950's.

#### Donner Pass Route Historic Timetable No. 1

Malcolm Frost and Roger Staab are nearing completion of a timetable that will list nearly all the station names that have appeared on the Donner Route over the years. This timetable will be viewable on our web site under the Mountain tab, or a PDF version can be downloaded for viewing or printing. In the future, hyperlinks will take the viewer from a station name in the timetable to a web page with photos and information about that station. Hard copies of the timetable will be printed and sold as a club fundraiser.

**Legend**

X - Main Cross-Over    x - Mammal Cross-Over  
 Y - Wye    y - Historic Wye  
 B - Ballroom Track    b - Historic Ballroom Trk  
 P - Passenger Depot    o - Overlook  
 S - Staff Station (ca 1905-1915)

CP - Control Point    RV xxx - Roseville Sub  
 (near CP Roseville from Timetable #1, 2009)

*Stations in Italic are Historic.*


Stations in blue are hyperlinks to photo pages  
*Renamed Stations: Letter Name - Early Name*

The PSRHS Historical Timetable was created to depict the relative location of historic sites along the Donner, Donner Pass Route and the original Transcontinental Railroad. This timetable spans the periods of ownership by the Central Pacific Railroad, Southern Pacific Railroad and most recently the Union Pacific Railroad. Some locations are interpretation as the different railroads over time have adjusted the mileage along the route.

The Placer Sierra Railroad Heritage Society is a Non-Profit organization chartered to preserve the history along the transportation corridor known as the Donner Pass Route.

For more information, to become a member or to donate please go to [psrhs.org](http://psrhs.org).

Mail may be directed to:  
 Placer Sierra Railroad Heritage Society  
 P.O. Box 1776  
 Colfax, CA 95713



Information for distribution purposes only. Not for commercial or scheduling use. Not to be considered either accurate or reliable.

© All Rights Reserved  
 Placer Sierra Railroad Heritage Society 2011



### DONNER PASS ROUTE

### HISTORIC TIMETABLE No. 1

COMPILED SEPT. 1, 2011





PUBLISHED BY  
 PLACER-SIERRA  
 RAILROAD HERITAGE SOCIETY  
[www.psrhs.org](http://www.psrhs.org)

CP No.	Station	No. 1	No. 2	
243.1	Sparks	P.V.	243.7	
RV 242	241.0	Sparks	X	241.0
240.0	239.0	Sparks	P	240.7
RV 239	239.1	Sparks	X	239.1
235.4	235.4	Linden	S	235.4
234.2	234.2	Linden	S	234.2
233.2	233.2	Wye	S	233.2
230.2	230.2	Yuba	S	230.2
229.2	229.2	Enter Lx - Enter Coal	S	229.2
228.2	228.2	Mission - Enter Mission	S	228.2
226.2	226.2	Frank	S	226.2
227.7	227.7	Coal	S	227.7
226.2	226.2	Linden	S	226.2
224.7	224.7	Wye	S	224.7
223.8	223.8	Enter	S	223.8
220.7	220.7	Flotation	S	220.7
218.7	218.7	Flotation	S	218.7
217.7	217.7	Flotation	S	217.7
216.7	216.7	Flotation	S	216.7
215.7	215.7	Flotation	S	215.7
214.2	214.2	Flotation	S	214.2
213.2	213.2	Flotation	S	213.2
212.4	212.4	Flotation	S	212.4
211.4	211.4	Flotation	S	211.4
210.4	210.4	Flotation	S	210.4
209.4	209.4	Flotation	S	209.4
208.4	208.4	Flotation	S	208.4
207.4	207.4	Flotation	S	207.4
206.4	206.4	Flotation	S	206.4
205.4	205.4	Flotation	S	205.4
204.4	204.4	Flotation	S	204.4
203.4	203.4	Flotation	S	203.4
202.4	202.4	Flotation	S	202.4
201.4	201.4	Flotation	S	201.4
200.4	200.4	Flotation	S	200.4
199.4	199.4	Flotation	S	199.4
198.4	198.4	Flotation	S	198.4
197.4	197.4	Flotation	S	197.4
196.4	196.4	Flotation	S	196.4
195.4	195.4	Flotation	S	195.4
194.4	194.4	Flotation	S	194.4
193.4	193.4	Flotation	S	193.4
192.4	192.4	Flotation	S	192.4
191.4	191.4	Flotation	S	191.4
190.4	190.4	Flotation	S	190.4
189.4	189.4	Flotation	S	189.4
188.4	188.4	Flotation	S	188.4
187.4	187.4	Flotation	S	187.4
186.4	186.4	Flotation	S	186.4
185.4	185.4	Flotation	S	185.4
184.4	184.4	Flotation	S	184.4
183.4	183.4	Flotation	S	183.4
182.4	182.4	Flotation	S	182.4
181.4	181.4	Flotation	S	181.4
180.4	180.4	Flotation	S	180.4

CP No.	Station	No. 1	No. 2	
179.4	179.4	Flotation	S	179.4
178.4	178.4	Flotation	S	178.4
177.4	177.4	Flotation	S	177.4
176.4	176.4	Flotation	S	176.4
175.4	175.4	Flotation	S	175.4
174.4	174.4	Flotation	S	174.4
173.4	173.4	Flotation	S	173.4
172.4	172.4	Flotation	S	172.4
171.4	171.4	Flotation	S	171.4
170.4	170.4	Flotation	S	170.4
169.4	169.4	Flotation	S	169.4
168.4	168.4	Flotation	S	168.4
167.4	167.4	Flotation	S	167.4
166.4	166.4	Flotation	S	166.4
165.4	165.4	Flotation	S	165.4
164.4	164.4	Flotation	S	164.4
163.4	163.4	Flotation	S	163.4
162.4	162.4	Flotation	S	162.4
161.4	161.4	Flotation	S	161.4
160.4	160.4	Flotation	S	160.4
159.4	159.4	Flotation	S	159.4
158.4	158.4	Flotation	S	158.4
157.4	157.4	Flotation	S	157.4
156.4	156.4	Flotation	S	156.4
155.4	155.4	Flotation	S	155.4
154.4	154.4	Flotation	S	154.4
153.4	153.4	Flotation	S	153.4
152.4	152.4	Flotation	S	152.4
151.4	151.4	Flotation	S	151.4
150.4	150.4	Flotation	S	150.4
149.4	149.4	Flotation	S	149.4
148.4	148.4	Flotation	S	148.4
147.4	147.4	Flotation	S	147.4
146.4	146.4	Flotation	S	146.4
145.4	145.4	Flotation	S	145.4
144.4	144.4	Flotation	S	144.4
143.4	143.4	Flotation	S	143.4
142.4	142.4	Flotation	S	142.4
141.4	141.4	Flotation	S	141.4
140.4	140.4	Flotation	S	140.4
139.4	139.4	Flotation	S	139.4
138.4	138.4	Flotation	S	138.4
137.4	137.4	Flotation	S	137.4
136.4	136.4	Flotation	S	136.4
135.4	135.4	Flotation	S	135.4
134.4	134.4	Flotation	S	134.4
133.4	133.4	Flotation	S	133.4
132.4	132.4	Flotation	S	132.4
131.4	131.4	Flotation	S	131.4
130.4	130.4	Flotation	S	130.4
129.4	129.4	Flotation	S	129.4
128.4	128.4	Flotation	S	128.4
127.4	127.4	Flotation	S	127.4
126.4	126.4	Flotation	S	126.4
125.4	125.4	Flotation	S	125.4
124.4	124.4	Flotation	S	124.4
123.4	123.4	Flotation	S	123.4
122.4	122.4	Flotation	S	122.4
121.4	121.4	Flotation	S	121.4
120.4	120.4	Flotation	S	120.4
119.4	119.4	Flotation	S	119.4
118.4	118.4	Flotation	S	118.4
117.4	117.4	Flotation	S	117.4
116.4	116.4	Flotation	S	116.4
115.4	115.4	Flotation	S	115.4
114.4	114.4	Flotation	S	114.4
113.4	113.4	Flotation	S	113.4
112.4	112.4	Flotation	S	112.4
111.4	111.4	Flotation	S	111.4
110.4	110.4	Flotation	S	110.4
109.4	109.4	Flotation	S	109.4
108.4	108.4	Flotation	S	108.4
107.4	107.4	Flotation	S	107.4
106.4	106.4	Flotation	S	106.4
105.4	105.4	Flotation	S	105.4
104.4	104.4	Flotation	S	104.4
103.4	103.4	Flotation	S	103.4
102.4	102.4	Flotation	S	102.4
101.4	101.4	Flotation	S	101.4
100.4	100.4	Flotation	S	100.4

# Placer-Sierra Railroad Heritage Society

September 2011 Newsletter



## August Meeting Presentations –

### Colfax Caboose Update – Tony Hesch

Tony presented a series of photos and accompanying narration to illustrate the work that has been done to date on reconstructing the Colfax NWP caboose, and to show current status of the PSRHS-managed project. After the old electrical service was removed from the side of the caboose and new electrical service provided to the area, old siding was removed from the track side of the caboose and revamping of the support framing was begun. A major effort went into replacing a portion of the main beam running the length of the caboose.



With reconstruction of the framing and nailing strips on the track side nearly complete, new siding and windows will soon be installed on that portion. The process will then be repeated on the other side and ends.



### Operating a Steam Locomotive – Peter Hills

After Tony's presentation, Peter Hills treated us to a British video that provided an up-close, detailed and personal look at what it takes to operate a steam locomotive. The DVD was produced by "The Railway Magazine" and featured a Western Region 2-6-0 tank engine running on the North Norfolk Railway.

# Placer-Sierra Railroad Heritage Society

September 2011 Newsletter



## *FROM THE ARCHIVES*

**Last Month's Mystery Photo:** Last month we posed the question why the white poles to the right of the tracks at the Auburn Depot in this circa 1908 postcard photo provided by Art Sommers. Ken Yeo was the only person to respond. He speculates that since this was a passenger depot, the white poles may have been some sort of lighting for the platform. If anyone has any further thoughts to offer, please forward them to the editor.



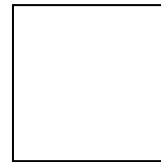
**September Photo** – This photo from the Ken Yeo collection should be an easy one to identify - it was included in a past PSRHS meeting presentation. Where and roughly when was the photo taken, and what was the significance of the train consist in this scene? Answers in the October newsletter.



**CPRR/SP Donner Route Timeline:** April 25, 1864: Central Pacific began regular passenger service to Roseville, 18 miles (29 km) from Sacramento, operating three trains daily in each direction, with connections at Roseville to the California Central Railroad. First week revenue for 298 passengers equaled \$354. In comparison, the engine Pacific cost \$15,000 to purchase and ship from the east coast.

Please forward any comments, suggestions or information for inclusion in future issues of the newsletter. Next Issue Deadline – October 5  
Editor: Roger Staab,  
(530) 346-6722  
rsrr@exwire.com

Placer-Sierra RR Heritage Society  
P.O. Box 1776  
Colfax, Ca 95713



---

To:

---

Come to the 2011  
Colfax Railroad  
Days and ride the  
speeders.



***Monthly Meeting...***

The next PSRHS meeting will be held at 7:00 PM on **Thursday, September 22nd** in the Multi-purpose Senior Citizen Center at the Dewitt Complex in Auburn (enter on D Ave.). See Extra Board section on web site for map and directions.

**Membership Information**

Individual Members = \$20.00/yr  
Family Membership = \$25.00/yr

- Monthly Meetings (4th Thursday) and Newsletter
- Member Activities, Presentations and Field Trips
- Display and Restoration Projects

PSRHS, P.O. Box 1776, Colfax, CA 95713  
[www.psrhs.org](http://www.psrhs.org)