

# Placer-Sierra Railroad Heritage Society

---



[www.psrhs.org](http://www.psrhs.org)

---

## February 2012 Newsletter

### In this issue:

**February Meeting Presentation - Jim Rutherford** will show photos and provide a narrative on the history of the Quincy Railroad. Further details on page 2.

**UP Track Work Update.** Page 2 and photo on page 4.

**Summary of January meeting, Election of PSRHS Board Members and Officers, and Approval of Amended By-Laws.** Page 2

**From the Archives.** Page 3



---

### Scheduled Events

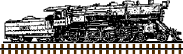


- Feb 23    Monthly Meeting and Presentation – **Jim Rutherford** will show photos and narrate a program on the Quincy Railroad.
- Mar 10    Winterail 2012 Railroadiana Show and Sale – Stockton    [www.winterail.com](http://www.winterail.com)
- Mar 22    Monthly Meeting and Presentation – Topic to be announced.

Check out our updated web site at [www.psrhs.org](http://www.psrhs.org) Additional station pages have recently been added to the Mountain timetable tab. We continue to add content, and welcome your ideas and input.

*If you have not already done so, please remember to renew your annual PSRHS membership.*

# Placer-Sierra Railroad Heritage Society



## February 2012 Newsletter

### February Meeting – Thursday, 23 February, 7:00PM - DeWitt Senior Center

**February Program:** "The Quincy Railroad", a slide show and presentation by **Jim Rutherford**. The 6 mile long Quincy Railroad is located in Plumas County, CA, in the Feather River area of Northern California. The railroad was built to connect the town of Quincy (and lumber interests nearby) to the Western Pacific Railroad (WP) a few miles away. From Quincy, the railroad ran across the flat American Valley and then climbed a 3/4 mile 5% grade up to the WP at Quincy Junction.



Jim will cover the history of the line from the development of the railroad to present-day operations.

### Summary of January Meeting

**President's comments.** President Wood presented a year in retrospective covering meetings, field trips and Colfax Railroad Days event. Jim encouraged participation in arranging field trips and joining the committee for the 2012 Colfax Railroad Days event.

**Colfax Caboose Update.** Tony Hesch presented the current status on the Colfax Caboose reconstruction. Dedicated funds have been used to purchase siding. The siding has been prepped, primed, painted and awaiting curing to begin installation. Estimated \$3000 in additional funds are required to complete the project. Work is currently on hold awaiting better weather.

**Election.** Malcolm Frost conducted a vote by the membership for adoption of By-law amendments and to elect board members. With 19 voting members present the By-Law Amendments were adopted by unanimous vote. Shirley Belleville, Brendan Compton

and Jim Wood were affirmed by vote of the membership to fill three year terms on the Board of Directors.

**January Program:** Brendan Compton wowed us with the first of a series of DVD videos he is producing on the operation of the rotary snowplows during the major snowstorms of 2011. This first DVD, **Rotaries, Avalanche on the Mountain**, covers the preparations to get the rotaries ready to meet the call if needed, and the initial run from Roseville to Truckee. Once again Brendan has captured the feel of "being there" with the crews as problems were encountered and overcome, and the battle for the mountain was waged against Mother Nature with the mighty rotaries. The membership wants to thank Brendan for his wonderful presentation and continued support of the society. For more information on this or other Donner DVD's produced by Brendan, visit his web site at <http://donnerrails.com/>

### Board of Directors Meeting

The PSRHS board met on February 16, and elected officers for 2012. Officers and board members are:

Jim Wood - 2014 - President	Malcolm Frost - 2013
Brendan Compton - 2014 - VP	Tony Hesch - 2013
Shirley Belleville - 2014 - Secy	Ken Yeo - 2013
Peter Hills - 2012 - Treasurer	Bill Yoder - 2012
	Walt Wilson - 2012

Additional items of discussion from the board meeting will appear in the March newsletter.

### UP Track Work Update

Track sections have been pre-fabricated and positioned near the downtown Colfax crossing for converting track 2 to concrete ties from the manual crossover east of Grass Valley St. to and including the Colfax yard switch. The TRT-909 will likely start its track-laying west of the new yard switch once the switch is installed. See page 4 for another view of the TRT-909 in action.

Paul Lanyi passed on the following updated schedule of track work as of January 25.

*TRT shows working track 1 from MP120 down to 110, showing a tentative finish date of 2/16. Then showing MP141 to 117 on track 2 from 2/16 through the first week of April.*

# Placer-Sierra Railroad Heritage Society

## February 2012 Newsletter



### *FROM THE ARCHIVES*

**January's Mystery Photo:** The photo at right from the January issue is a view of Towle looking eastbound. The hotel is at right, Towle depot beyond it, and a portion of the company store is at left. Below right is roughly the same view today. The tracks curve to the right in the distance and go under I-80 one mile east of the Alta exit. *Old photos from Ken Yeo collection.*

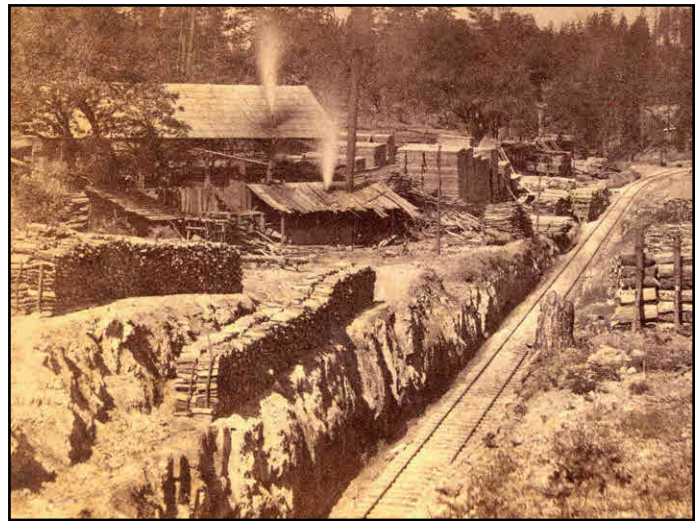
The photo below shows Towle and Canyon Creek mill looking westbound. Curved track in the foreground is the SP mainline



where it today crosses under I-80. Lumber storage is at right, mill buildings at center. Allen Towle's mansion is atop the hill at left center. The Towle hotel, depot and store are left of center beyond the tree-covered hill.



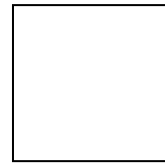
**February Photo** – Staying with our theme of mills along the route, where was this mill located and what remains today? Answers in the March newsletter. *Hart photo from the PSRHS collection.*



**CPRR/SP Donner Route Timeline:** There were some 1200 laborers, many of them Irish, on the company payroll in early 1865, working on Bloomer Cut and the grade above Newcastle, under the direction of Charley Crocker and his construction boss, James Strobridge. Two survey crews preceded the construction crews, one just ahead of construction, and the other pressing toward the Sierra summit.

Please forward any comments, suggestions or information for inclusion in future issues of the newsletter. Next Issue Deadline – March 12:  
Roger Staab  
(530) 346-6722  
roger.staab@psrhs.org

Placer-Sierra RR Heritage Society  
P.O. Box 1776  
Colfax, Ca 95713



---

To:

---

This view of the TRT-909 was taken from a hillside above the tracks at the new crossover west of Colfax. The old track marked with green paint is being lifted and spread at right to allow removal of old wood ties and placement of new concrete ties. The new track is being pulled in at left and placed on the concrete ties. The equipment is stopped while crews work at righting a flipped tie. *Photo courtesy of Chris Bekiaris*



### ***Monthly Meeting...***

The next PSRHS meeting will be held at 7:00 PM on **Thursday, February 23rd** in the Multi-purpose Senior Citizen Center at the Dewitt Complex in Auburn (enter on D Ave.). See Extra Board section on web site for map and directions.

### **Membership Information**

Individual Members = \$20.00/yr  
Family Membership = \$25.00/yr

- Monthly Meetings (4th Thursday) and Newsletter
- Member Activities, Presentations and Field Trips
- Display and Restoration Projects

PSRHS, P.O. Box 1776, Colfax, CA 95713  
[www.psrhs.org](http://www.psrhs.org)