

Placer-Sierra Railroad Heritage Society



www.psrhs.org

October 2013 Newsletter

In this issue:

Nomination and election of Board Members.
Page 2

Colfax Railroad Days Special Issue. Photos of the event taken by our members and guests.
Pages 2-3

Passing Scene. Page 4

From the Archives. Page 4



Checking out one of several model railroad layouts at the 2013 Colfax Railroad Days. Photo by Paul Lanyi.

Scheduled Events & Notices



No Monthly Meeting in October

- Nov. 21 **Monthly Meeting & Program – 6:30 pm**
- Annual Potluck Dinner Meeting
 - Recap of Colfax Railroad Days.
 - Peter Hills will show pictures of his summer trip riding England's rails
 - NOTE LOCATION - Auburn Airport Terminal Bldg

Fall Field Trip – Siemens Sacramento – Tour of Siemens' facility in South Sacramento. The Field Trip was postponed from its Oct. 15 scheduled date. When it is rescheduled details will be provided in a separate email to members. Attendance limited to PSRHS Members.

Placer-Sierra Railroad Heritage Society



October 2013 Newsletter

Next member meeting Nov. 21.

No monthly meeting in October.

Annual potluck dinner Nov. 21, 6:30pm. Peter Hills will show photos of his recent rail-riding trip to England. More details in November newsletter.

Auburn Airport Terminal Bldg, New Airport Rd.

Nomination and election of board members:

The terms of board members Dave Ferreira, Malcolm Frost and Ken Yeo expire in Dec. 2013. Nominations for the three-year positions can be made at the November meeting, followed by election of board members.

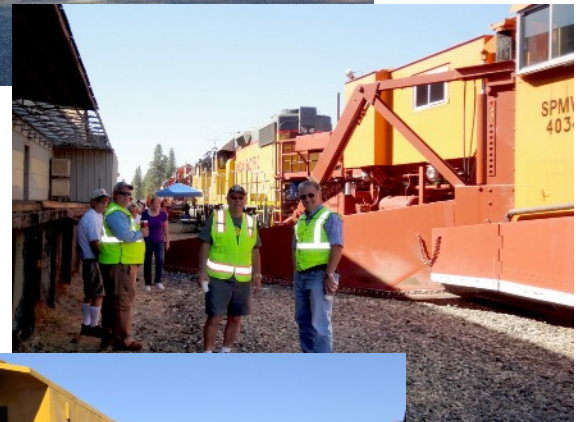
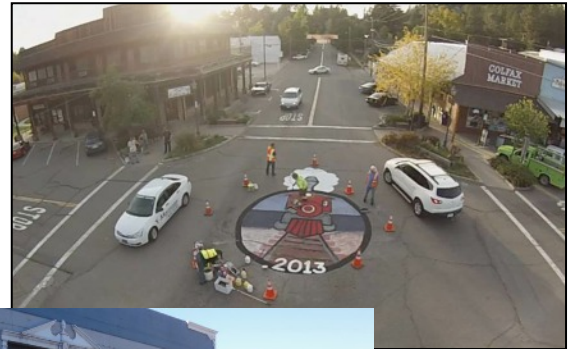
Colfax Railroad Days 2013

This is the first year that PSRHS has taken the lead on organizing and staging Colfax Railroad Days, and the resulting event received many kudos from attendees and vendors. Steady crowds were drawn to the UP snow removal equipment with employees explaining their operation, several model railroad layouts, vintage cars, trucks, tractors and gas engines, steam train rides, railroad art, movies, and historic photos. At our PSRHS booth we conducted several raffles and sold t-shirts as fundraisers.

A big **thank you** to all who volunteered your time to help make this event the success that it was. Pulling this together was possible only through many hours spent on advance planning and with the help of the volunteers who staffed the many venues on the days of the event. Your combined actions reflect very well on PSRHS and our stated goals to preserve and to display the railroad history of the Donner Pass Route.

If you have any observations you wish to share about the event, either positive or opportunities for improvement, please forward your comments to the editor at the email address shown on page 3.

On this and the following page are some of the scenes from this year's event. Thanks to Paul Lanyi, Mike Haire, Brendan Compton, Malcolm Frost, Tony Hesch, Bill Yoder, Chris Bekiaris and Karla Tilley for sharing copies of their photos.



Placer-Sierra Railroad Heritage Society

October 2013 Newsletter



Membership Information

Individual Members = \$25.00/yr
Each Additional Member Card = \$5.00/yr

- Monthly Meetings (4th Thursday) and Newsletter
- Member Activities, Presentations and Field Trips
- Display and Restoration Projects

PSRHS, P.O. Box 1776, Colfax, CA 95713
www.psrhs.org

Reader comments, additional details, etc., are invited on any newsletter items or photos. Please forward comments, suggestions or information for inclusion in future issues of the newsletter to:

Roger Staab (530) 346-6722 roger.staab@psrhs.org

Placer-Sierra Railroad Heritage Society



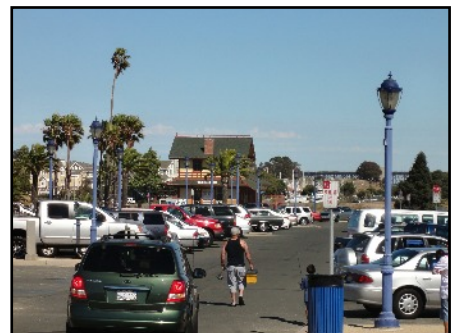
October 2013 Newsletter



Passing Scene – Visitors to Colfax Railroad Days were treated to a string of private varnish cars on Saturday's Eastbound AMTRAK #6. *Photo by Paul Lanyi.*

From the Archives

September Photo: From 1879 to 1930, CPRR and later Southern Pacific transported train cars and passengers on large ferries across the Carquinez Strait from Benicia to Port Costa on the route between Sacramento and Oakland (see Donner Route Timeline below). The two ferries that operated here were the largest in the world at the time. In 1902 a depot built originally for the town of Banta, CA, was floated on a barge to Benicia and became the Benicia depot. These 2013 photos show two views of the depot building, a remaining portion of the long pier that extended into the Carquinez Strait, and a view from the pier toward the depot with the Benicia-Martinez railroad and highway bridges in the distance. *Photos by Roger Staab.*



CPRR/SP Donner Route Timeline: CPRR acquired California Pacific Railroad in 1876, giving it a route from Sacramento to Vallejo with steamboat link to San Francisco. In 1879, CPRR completed a line via Suisun Marsh to Benicia, where train cars and passengers were transported across the Carquinez Strait on large ferries to Port Costa, then back on land route to Oakland. These ferries operated until the 5600-foot double-track Benicia-Martinez bridge was completed in 1930.