

# Placer-Sierra Railroad Heritage Society

---



[www.psrhs.org](http://www.psrhs.org)

---

## January 2015 Newsletter

### In this issue:

**January Meeting and Presentation** Page 2

**PSRHS Membership Renewal.** Page 2

**Editorial.** Page 2

**Passing Scene.** Page 3

**From the Archives.** Page 4



*John Perry explains all to young visitors at Colfax Railroad Days 2014. Paul Lanyi photo.*

---

### Scheduled Events & Notices



- Jan 22** PSRHS Meeting and Presentation – 7 pm  
– Auburn Airport Terminal Bldg  
– Program - Peter Hills – “The Canadian” Details on page 2.
- Jan 26** PSRHS Board Meeting – 7 pm – Auburn Airport Terminal Bldg
- Feb 26** PSRHS Meeting and Presentation – 7 pm  
– Auburn Airport Terminal Bldg – Program TBA

### \*\*\*\* Reminder \*\*\*\*

If you have not already done so, it is time to renew your annual membership in PSRHS.  
If you like what you see at our meetings or field trips, or projects such as the caboose renovation or Colfax Railroad Days, please renew or join PSRHS.



# Placer-Sierra Railroad Heritage Society

## January 2015 Newsletter

**Next meeting 7:00PM, January 22nd**  
**Auburn Airport Terminal Building**

**Program:** Peter Hills presents "The Canadian". Photographs from last fall's trip to Montreal, Toronto, and Vancouver with travel on VIA's the "Canadian" from Toronto to Vancouver, some 2,200 plus miles: Included are train station architecture, Canadian National Railway Museum, subway trains, trolley lines, and views from the "Dome". We can anticipate another of Peter's interesting and informative presentations.

### PSRHS Membership Renewal

If you haven't already done so, it is time to renew your membership in PSRHS. To date only about 1/4 of last year's members have renewed. Membership dues are one of our primary ways to raise funds for club projects (see following article for how funds are used to benefit our membership and our local communities).

Renewal is easy – mail a check to the club address shown on page 3, or renew on line at [psrhs.org](http://psrhs.org).

**Editorial -- Please Read --** Roger Staab, editor

### New Year, New Opportunities to Get Involved

*'Club' -- an organization of people with a common purpose or interest who meet regularly and share activities*

I am a charter member of PSRHS, served as vice-president for two years, president for two, board member for eight, and I have generated the monthly newsletter for the past four years. I have observed many changes in our club, most of them positive. New leaders have emerged, and our current board of directors is very proactive in steering club actions.

I ordinarily reserve this page for club news, activities and informational items. Today, though, I have some thoughts to share as PSRHS moves into its 2nd decade.

As happens with organizations, most of the many club activities are accomplished by a very small percentage of the club membership. Those who get involved do not possess any magic skills or insider information.

What they do bring is a willingness to step in and do what needs to be done, with sleeves rolled up and an "I'll give it my best shot" attitude.

So what do your club volunteers do in the background to produce events or materials that you our members can enjoy? Here is a partial list:

- Provide labor needed to carry out all tasks in this list
- Plan and coordinate major events like Railroad Days and the many tasks necessary to put on an event
- Line up presentations for monthly meetings
- Arrange field trips to nearby areas of interest
- Research historical information for newsletters, Donner Crossings, books and other publications
- Maintain member list and issue member cards
- Keep the club's financial books and submit reports
- Raise funds for club activities and events
- Promote the club at other events
- Coordinate with community and railroad officials for outdoor displays and future museum
- Scan, catalog and maintain inventory of items donated to or purchased by PSRHS
- Collect photos or other material for archives
- Coordinate renovation projects like Colfax depot and caboose and ensure work gets done

Those who committed to these tasks do wear down without your support. Each area is an opportunity for you to contribute as an active participant in your club's activities. Yet we see the same few faces for Railroad Days planning meetings, the worker pool for finishing the caboose renovation has evaporated, and I can count on one hand the number of unsolicited articles, calendar listings, or other items of interest that have been submitted for inclusion in newsletters or Donner Crossings to share with club members.

Think about a bit of history you would like to help explore, brief article of interest, meeting presentation topic, location for a future field trip, skills you can offer to club activities, willingness to help paint the caboose, contact potential sponsors, staff a booth, plan event activities, etc., etc., etc. It doesn't take as much from each of us if we all work together.





# Placer-Sierra Railroad Heritage Society



January 2015 Newsletter

## Passing Scene



The November newsletter included a photo of City of Spokane in Great Northern colors, passing through Colfax. Attached to that same westbound AMTRAK was this car, Canadian National Burrard. It was built by Pullman for Canadian National in 1954. The car was one of two used for special visitors and VIP's, including Queen Elizabeth's visit to open the Saint Lawrence Seaway. The car is more recently based in California and has been featured in numerous private railcar excursions. 2007 photo by Roger Staab.





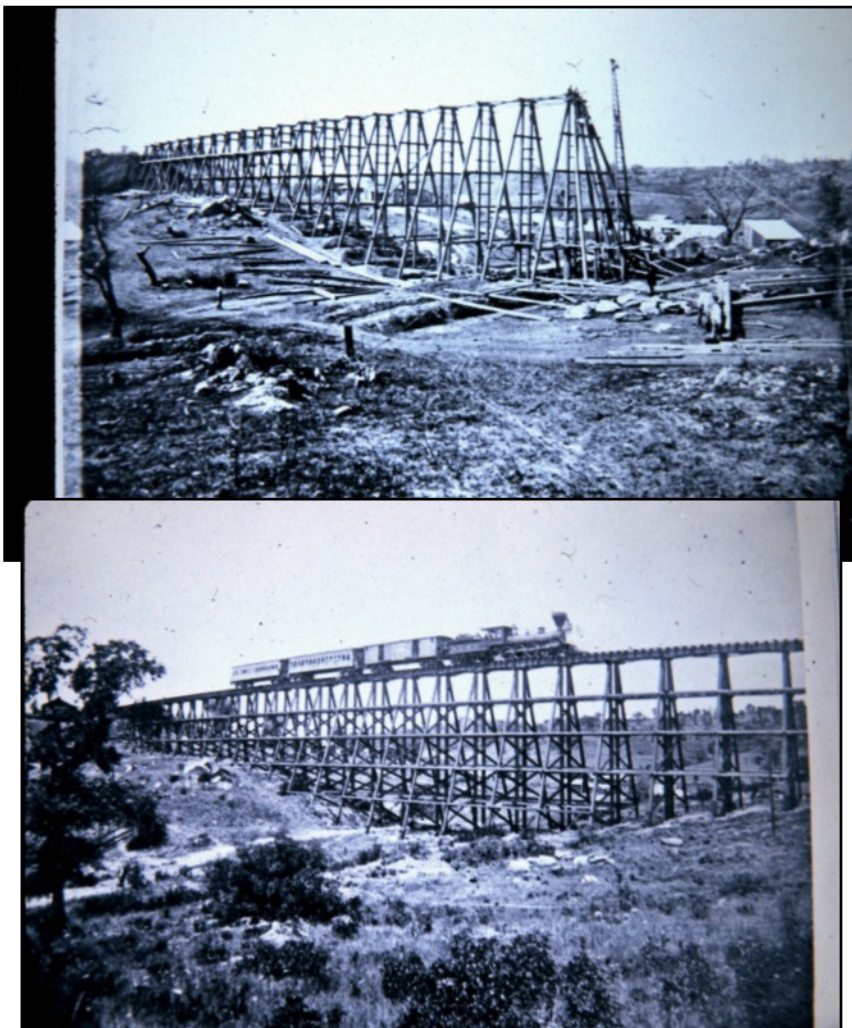
# Placer-Sierra Railroad Heritage Society

January 2015 Newsletter

## From the Archives

### January Mystery Photos:

Judging from recent email exchanges, this should be a slam dunk for at least some of our members. The tenuous-looking trestle under construction in the upper photo is shown actually supporting a real train in the lower photo. Where was this trestle located, and what is found there today? *Both photos from the Ken Yeo Collection*



**CPRR/SP Donner Route Timeline:** To ease the uphill grade between Rocklin and Newcastle as part of 1909 double-tracking, the new eastbound track crossed over the old track just north of Rocklin, becoming left-hand running, then skirted the hillside behind Loomis through three new tunnels. Old and new tracks rejoined at Newcastle, then followed a new alignment into double-tracked Tunnel 18. The new eastbound track bypassed the Loomis station, so local trains ran both directions on the westbound track between Loomis and Rocklin.

### Membership Information

Individual Members = \$25.00/yr  
Each Additional Member Card = \$5.00/yr

- Monthly Meetings (4th Thursday) and Newsletter
- Member Activities, Presentations and Field Trips
- Display and Restoration Projects

PSRHS, P.O. Box 1776, Colfax, CA 95713  
[www.psrhs.org](http://www.psrhs.org)

Reader comments, additional details, etc., are invited on any newsletter items or photos. Please forward comments, suggestions or information for inclusion in future issues of the newsletter to:

Roger Staab (530) 346-6722 [roger.staab@psrhs.org](mailto:roger.staab@psrhs.org)