

Placer-Sierra Railroad Heritage Society



www.psrhs.org

May 2015 Newsletter

In this issue:

- May Meeting and Presentation** Page 2
- Big Day of Giving (Big Dog) Results.** Page 2
- Colfax RR Days Planning Meetings.** Page 2
- New Web Pages.** Page 2
- Passing Scene.** Page 3
- From the Archives.** Page 4



UP 1996, the SP Heritage Locomotive, appeared in Colfax in 2006. See page 3. Roger Staab Photo

Scheduled Events & Notices



- May 28** PSRHS Meeting and Presentation – 7 pm
 - Auburn Airport Terminal Bldg – Program - Brendan Compton
 - Video - Elvas Tower Operations and Operators - Details on page 2.
- Jun 08** Colfax RR Days Planning Meeting – 7 pm – Colfax City Council Chambers
- Jun 25** PSRHS Meeting and Presentation – 7 pm
 - Auburn Airport Terminal Bldg – Program TBA



Placer-Sierra Railroad Heritage Society

May 2015 Newsletter

Next meeting 7:00PM, May 28th
Auburn Airport Terminal Building

Program: Elvas Tower. **Brendan Compton** captured video at Sacramento's Elvas Tower before it was shut down. He will share some of his video footage of operations at this Sacramento railroad landmark.

April Program: **Paul Beckstrom** presented a very informative slide show on operations of the former Swayne Lumber Co. near Oroville.

Spring Field Trip April 25

Jim Wood led a field trip to San Francisco to view Muni and Cable Car operations. Attendance was low but interest high in the many muni railroad sites viewed on this trip.

Big Day of Giving (Big Dog) Results

Thank You. We want to thank everyone who supported us during the Big Day of Giving. Your kind gifts totaled \$1950.00. Each dollar will go toward preserving the history of the Donner Pass Route. On behalf of the entire membership of PSRHS and community of Colfax we thank you.

Malcolm Frost
President

Colfax Railroad Days Sept. 12-13

Next Railroad Days planning meeting will be held on **Monday, June 8, 7pm, at the Colfax City Hall Council Chambers.** There is still plenty to do in preparation for Colfax's celebration of 150 years as a railroad town.

Specific items of discussion at the May meeting included:

- We will have a booth for Railroad Days at the Colfax July 3 event. T-Shirts will be sold at the booth in addition to providing information on Railroad Days.
- UP has agreed to provide a power display. Details

are being coordinated to determine what equipment will be available to bring up from Roseville.

- A craft train station will be included in the Kids Zone
- Plans are coming together for a fund-raising dinner at the depot Friday evening before RR days.

Please consider getting involved in making this a memorable event. You are invited to bring your ideas and a willingness to help. All contributions are welcome in whatever form you are able to assist.

If you would like to help, come to the next planning meeting or contact event coordinator Britni at

britni@colfaxrailroaddays.org

New psrhs.org Web Pages

Check our web site for these upgraded and new web pages.

The **Donner Crossings** page under the "Yard Office" tab has been updated to include article titles for all ten issues of Donner Crossings that have been published to date. If any paid members are missing past issues of Donner Crossings, PDF copies can be provided either by email or on CD.

Look under the "On the Hill" tab for a new page, **CPRR/SP Donner Route Timeline.** This page contains a compilation of the timeline paragraphs that have appeared on the "From The Archives" page of the monthly newsletter. Together they provide an abbreviated chronology of significant events in the construction and operation of the Donner Pass Route.



Passing Scene



Passing Scene photos from the last two months have featured two UP heritage engines as they passed through Colfax on an eastbound freight in September 2006. This month's view shows a close-up of UP 1996, the SP Heritage locomotive, which was third in a consist headed by UP 1983 (Western Pacific) and UP 8336. *Photo by Roger Staab.*

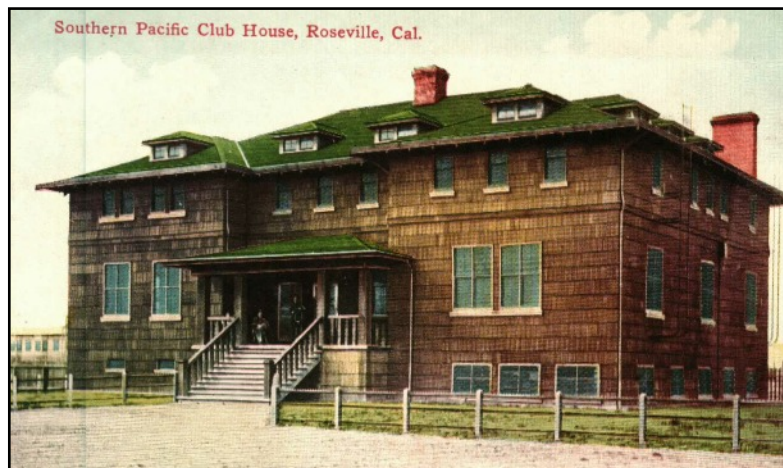
Placer-Sierra Railroad Heritage Society

May 2015 Newsletter

From the Archives

April Mystery Photo:

This three-story building housed the SP Clubhouse after its opening in Roseville in June 1908. The building provided sleeping quarters, barbershop, meals and “wholesome entertainment” for trainmen. The building was located near the corner of Washington and Pacific Streets, roughly where the present-day AMTRAK depot now sits. It was torn down in the 1950’s when the Washington Street underpass was built. *Art Sommers Collection*



May Mystery Photo:

Where is the location of this railroad accident? For bonus points, does anyone know the date of the incident? *Ken Yeo Collection*



CPRR/SP Donner Route Timeline: 1910-15 Double Tracking. Beyond Bowman the old and new tracks ran nearly parallel until reaching Clipper Gap. Just beyond Clipper Gap the hillside was cut away and both tracks were moved to a new alignment. Near Tunnel 0 new tunnels 23, 24 and 25 carried the eastbound track along an elevation lower than the old track. The new track crossed under the old at Tunnel 26 near Applegate, shifting the traffic flow back to right-hand running. The new eastbound track continued at a lower elevation through Tunnels 27-32 before rejoining the old track near Illinoistown gap. From there westbound and eastbound tracks were laid side-by-side on new grade into the new yard at Colfax.

Membership Information

Individual Members = \$25.00/yr
Each Additional Family Member = \$5.00/yr

- Monthly Meetings (4th Thursday) and Newsletter
- Member Activities, History Pubs and Field Trips
- Display and Restoration Projects

PSRHS, P.O. Box 1776, Colfax, CA 95713
or join/renew online at www.psrhs.org

Reader comments, additional details, etc., are invited on any newsletter items or photos. Please forward comments, suggestions or information for inclusion in future issues of the newsletter to:

Roger Staab (530) 346-6722 roger.staab@psrhs.org