

# Placer-Sierra Railroad Heritage Society

---



[www.psrhs.org](http://www.psrhs.org)

---

## July 2015 Newsletter

### In this issue:

**July Meeting and Presentation** Page 2

**Colfax RR Days Planning Meetings.** Page 2

**Passing Scene.** Page 3

**From the Archives.** Page 4



*Another UP Heritage Locomotive, UP 1989 D&RGW, appeared on the Donner route in 2015  
See larger photo on page 3. Mike Haire Photo*

---

### Scheduled Events & Notices



- July 23** PSRHS Meeting and Presentation – 7 pm  
– Auburn Airport Terminal Bldg – Program - Paul Greenfield  
– ATCS: Monitoring railroad traffic on Donner Pass for free. Details on page 2.
- Aug 3** Colfax RR Days Planning Meeting – 7 pm – Colfax City Council Chambers
- Aug 27** PSRHS Meeting and Presentation – 7 pm  
– Auburn Airport Terminal Bldg – Program TBA
- Aug 31** Colfax RR Days Planning Meeting – 7 pm – Colfax City Council Chambers

**\*\*\*Colfax Railroad Days Sept. 12-13\*\*\***

# Placer-Sierra Railroad Heritage Society

## July 2015 Newsletter

---

**Next meeting 7:00PM, Thursday July 23<sup>rd</sup>.  
Auburn Airport Terminal Building**

**Program:** ATCS: How you can monitor railroad traffic on Donner Pass for free. **Paul Greenfield** will be giving a presentation on Advanced Train Control System (ATCS) and how you can monitor it using a program called ATCS Monitor. Paul will cover the history of the railroad's transition to radio codeline, how ATCS is being used on the Union Pacific's Roseville Subdivision, and how easy it is to get started with ATCS monitoring. Several PSRHS members are actively involved with this aspect of the hobby.

### **Colfax Railroad Days Sept. 12-13**

Next Railroad Days planning meeting will be held on **Monday, August 3, 7pm, at the Colfax City Hall Council Chambers.** There is still plenty to do in preparation for Colfax's celebration of 150 years as a railroad town.

Specific items of discussion at the July 6 meeting included:

**Friday Night Dinner** - Lions Club will coordinate the event/supplies/drinks/ raffle ticket sales. Mahan's have agreed to handle the BBQ. Walt Wilson will provide tables/chairs. Need dinner tickets printed for distribution and sale by August Planning meeting. Tickets \$20 per person with 1 drink ticket and 1 raffle ticket provide for each dinner ticket sold. This year's event raffle will be held at the dinner. **Suggested that all event planning members and PSRHS Board members solicit/provide a raffle prize for the dinner raffle. Members also encouraged to provide raffle prizes.**

**RR Days** - Grand Prize will be the only raffle held during the Sat/Sun event. Tickets \$1/ticket, \$6 tickets for \$5, 25 tickets for \$20. Community center handling/coordinating all activities at the the center including the Kid's zone. 5-6 model railway clubs have committed to the event. Sacramento Valley Live Steamers will attend and provide rides. People Mover has been scheduled. Vendor applications are in progress. Event entertainment will be relocated to the depot area.

Jim working w/Steve Chandler ref. print sales. Chuck Spinks has invited several antique car clubs to participate - decision on closing main street for the car displays pending. RR movies will be shown in the Colfax Theatre - Brendan Compton coordinating. Lonnie Dickson coordinating with UPRR ref. the equipment display. Tony Hesch building RR type directional signs for locations around the event site. Peter Hills building several additional "donation" boxes for key sites around the event. Will need an up to date site map of the event for submittal to the City and inclusion in the Event Action Plan.

**Event Funding** - Jim advised that the solicitation letters have gone out to all past corporate supporters of the event. Request that everyone contact potential corporate supporters for the event. Funding is at a **critical** level - only one corporate sponsor to date - PG&E. We need a minimum of \$4-5,000 in sponsorships if the event is going to be able to cover expenses! Treasurer is beginning to panic!!!

**T-Shirts** - the event t-shirt design has been completed. PSRHS will purchase 40 shirts for event "CREW" volunteers, and 60 shirts for sale at the event. We need t-shirt ad sponsors (6 to 8 logos) - ads are \$125 or \$150 with shirt. Four t-shirt ad sponsors to date and two more possible.

**Insurance** - still waiting for response from UPRR lawyer ref. event insurance requirements. Our broker is working on the \$1 million rider for UP (above our \$4 million policy) for the event. Also, broker is attempting to get a rider to allow PSRHS to operate speeder rides on the spur track! Riders will be required to sign releases (if insurance issues resolved).

Special thanks to Peter Hills for providing these notes from the July 6 meeting and email updates.

If you would like to help, come to the next planning meeting or contact event coordinator Britni at [britni@colfaxrailroaddays.org](mailto:britni@colfaxrailroaddays.org)





### Passing Scene



A few weeks ago UP 1989, the D&RGW Heritage Locomotive, made a rare appearance on the Donner Route. Mike Haire captured several excellent photos of the eastbound run with UP 1989 on the point. This photo was taken at Troy, with I-80 in the background.

The locomotive began life as UP 8521, built in 2006 by EMD in London, Ontario, Canada. It was unveiled as UP 1989 in its D&RGW heritage paint at a ceremony at Denver in June 2006. *Photo by Mike Haire*

#### **Colfax Caboose Note**

The Colfax Lioness Club made another donation of \$1000 to help complete the caboose renovation project. Great progress has been made on the exterior, and interior sanding and painting are underway. Options are being considered for replacing the roofing material.

# Placer-Sierra Railroad Heritage Society

## July 2015 Newsletter

### From the Archives

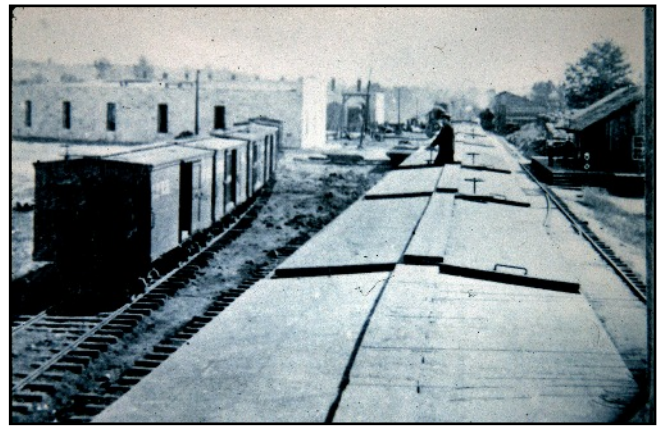
#### **May Mystery Photo:**

This scene is believed to be Newcastle looking west after double tracking. New tracks angle off to the left, while old tracks still serve buildings in the distance. Date of the incident is not known. Please email the editor if you can verify location and date of the incident. *Ken Yeo Collection*



#### **July Mystery Photo:**

This should be an easy one. Where was this photo taken and what buildings are visible? *Ken Yeo Collection*



**CPRR/SP Donner Route Timeline: 1910-15 Double Tracking.** With the new double track and yard in Colfax completed by 1913, mainline tracks west of Grass Valley St. now ran at a slight angle to the passenger depot. At Grass Valley St. the tracks curved to the left onto the old alignment past the freight depot. The 1905 turntable near Oak St. was soon abandoned, replaced by the new wye track near the 9 stall Colfax engine house. Colfax-based helper engines were added to the front of eastbound trains for the steep grade ahead. Many trains also had a helper cut in near the end of the train at Roseville. The Roseville helpers were cut and turned at Summit, while Colfax helpers were cut and turned at Emigrant Gap.

#### **Membership Information**

Individual Members = \$25.00/yr  
Each Additional Family Member = \$5.00/yr

- Monthly Meetings (4th Thursday) and Newsletter
- Member Activities, History Pubs and Field Trips
- Display and Restoration Projects

PSRHS, P.O. Box 1776, Colfax, CA 95713  
or join/renew online at [www.psrhs.org](http://www.psrhs.org)

Reader comments, additional details, etc., are invited on any newsletter items or photos. Please forward comments, suggestions or information for inclusion in future issues of the newsletter to:

Roger Staab (530) 346-6722 [roger.staab@psrhs.org](mailto:roger.staab@psrhs.org)