

Placer-Sierra Railroad Heritage Society



www.psrhs.org

February 2018 Newsletter

In this issue:

February Meeting and Presentation. Page 2

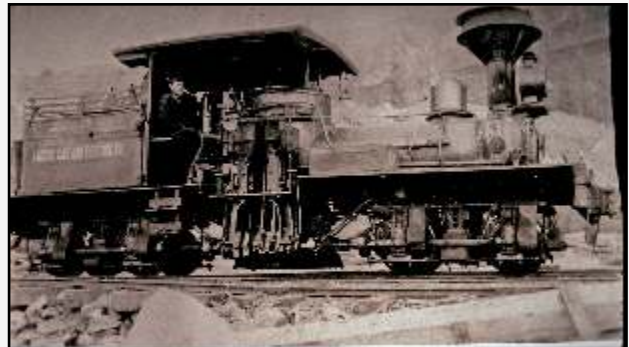
Caboose Update. Page 2

New Donner Crossings Issue out soon. Page 2

Passing Scene. Page 3

Amazon Smile Fund Raising. Page 3

From the Archives. Page 4



The mystery and contradiction surrounding this and other images of PG&E railroad operations will be the subject of the February PSRHS program. See pages 2 and 4 for more details. Ken Yeo collection

Scheduled Events & Notices



Feb 22 PSRHS Board Meeting (tentative) – 5:30pm prior to member meeting

Feb 22 PSRHS Monthly Meeting & Presentation – 7pm
Program – Roger Staab - Analyzing Mysteries in PG&E Railroad Photos

Future Programs//Events

Mar 22 Paul Helman, The Science and History of the Steam Locomotive Boiler

Apr 26 Bill Oudegeest, The Rails at Donner Summit

May 24 Andrew Brandon, Railroads of Nevada County

Jun 7-10 Pacific Narrow Gauge Conference, NCNG Museum, Nevada City

*****Remember to Renew your Membership for 2018*****

Placer-Sierra Railroad Heritage Society

February 2018 Newsletter



Monthly Member Meeting 7PM Thursday, Feb. 22nd, Auburn Airport Pilots Lounge

February Program: This month's program needs and invites the participation of meeting attendees. In researching the chapter on PG&E railroads for the new book, *Railroads of Placer County*, **Roger Staab** uncovered several "mysteries" including photo locations and what seems to be gaps between published information and some of the images in our collection. Roger will highlight some photos in question along with published text from historic and more recent documents, and draw on the knowledge and field experience of our members to attempt to shed light on the mysteries.

We encourage anyone with knowledge of or interest in PG&E's construction projects at Lake Spaulding Dam, Fordyce Dam, and Drum Forebay and powerhouse, especially railroad operations at those sites, to attend the meeting and participate in the discussion. For those not familiar with those PG&E construction projects, the evening should provide an interesting look at how to go about defining history from limited and at times contradictory hard data.

Also on the program: **Jim Wood** will update meeting attendees on the status of preliminary planning for a 2018 Railroad Days event in Colfax. The PSRHS board voted at its January meeting to pursue a September 2018 Railroad Days event providing another group steps up to provide overall coordination of the event. Our group would coordinate railroad equipment displays and features along with model railroad layouts.

If time permits, Roger will show some historic railroad images recently acquired by PSRHS.

January Program Recap: **Roger Staab** presented a preview of the new book, *Railroads of Placer County*, that he co-authored with **Art Sommers**. Roger discussed how the book came about, and showed a sample of the 200 photos and maps that are contained within its covers. Roger's share of royalties from the sale of the book have been assigned to PSRHS for the club's activities and projects.



Caboose Status

The caboose committee has outlined enhanced photo and video displays to help tell the caboose story. Some electrical wiring will be needed to power video equipment and displays. Grant applications are being prepared and fund-raisers planned for these improvements.

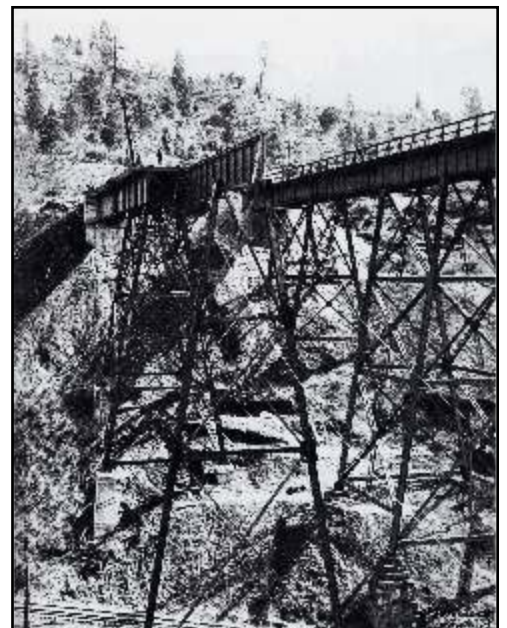
New Donner Crossings Issue Coming

The Spring 2018 issue of *Donner Crossings* is in final edit and **will soon be distributed to those who are on our list of paid memberships for 2018**. The objective of *Donner Crossings* is to provide a more in-depth look at one or two topics of interest for regional railroad history or operations.

The first article in the Spring 2018 issue draws from a handwritten account of the days preceding the stranding of the snowbound City of San Francisco in 1952. Harry Rasmussen was engineer on earlier runs of the COSF that week, and his first-hand account chronicles the events leading up to that fateful run.

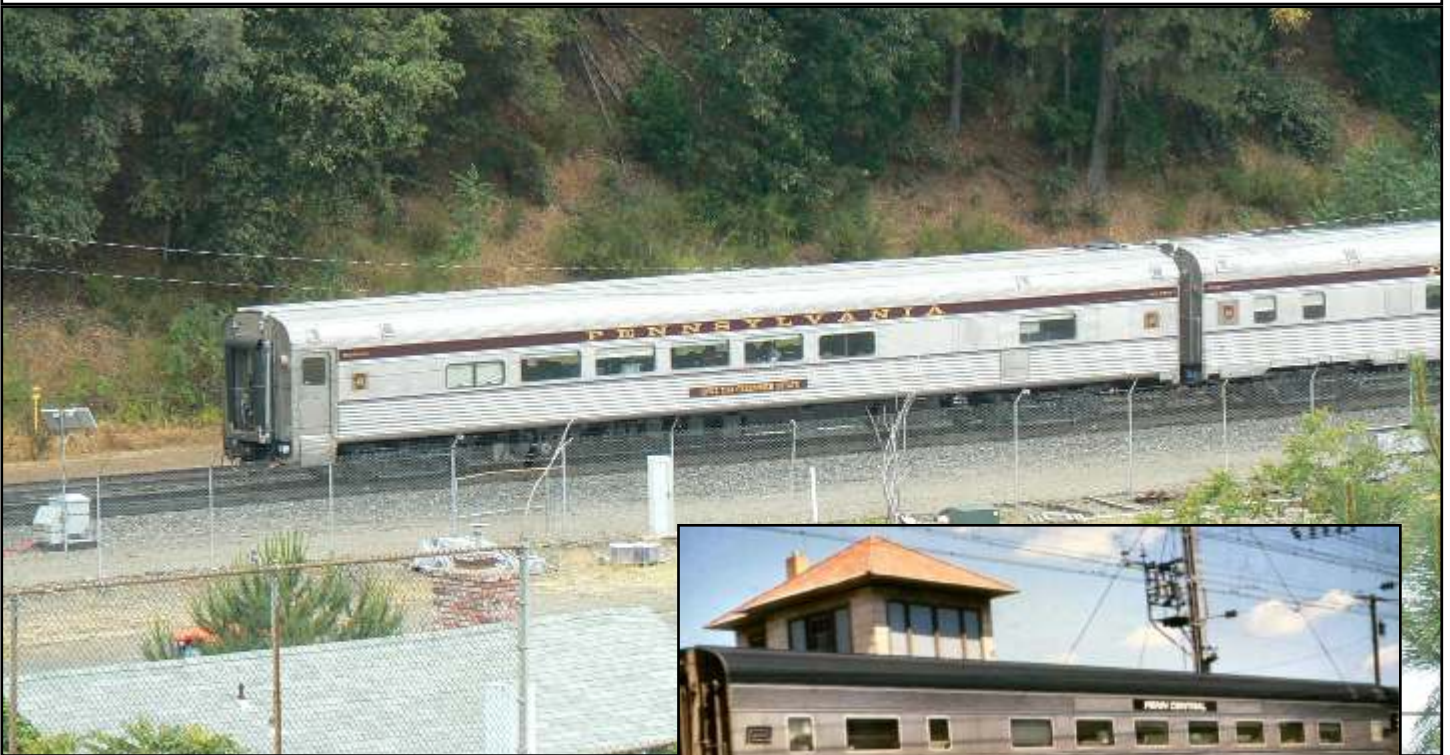
The second article highlights the significant role played by the standard-gauge gravel spur operated by the Nevada County Narrow Gauge Railroad in the 1912-13 construction of the new Spaulding Dam by PG&E..

The third rail for the NCNG gravel spur can be seen at the bottom left corner of this photo showing the second steel bridge at Long Ravine being built above the NCNG tracks. Photo from Best - NCNG



Passing Scene

Last month's newsletter featured Pennsylvania PRWX 7142 "Greenwich Harbor" as it passed through Colfax on the rear of westbound AMTRAK #5 on May 31, 2017. In that same consist was PRWX 7124 "Greenwich Estate", shown below. This car was built by Budd in 1941 as New York Central's parlor car #84 "Levi P. Morton". It later served as Penn Central #7124, and went to AMTRAK in 1971 as #3601. It was converted to a 56-seat coach #5699 in 1973, and sold in 1985. Its new owners converted it to a lounge car. *Main photo by Roger Staab. Inset Penn Central image from railfan.net. Car info found on a forum at rypn.org.*



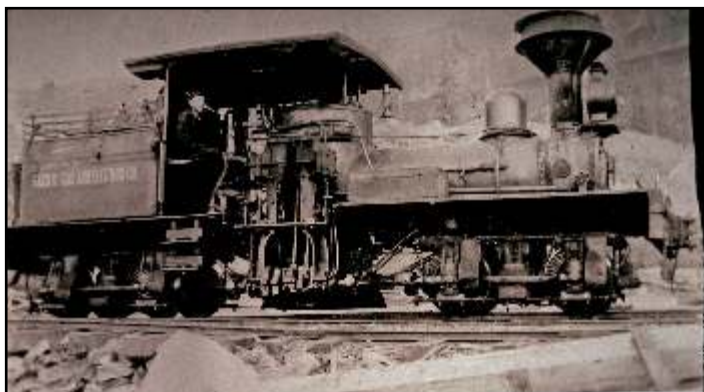
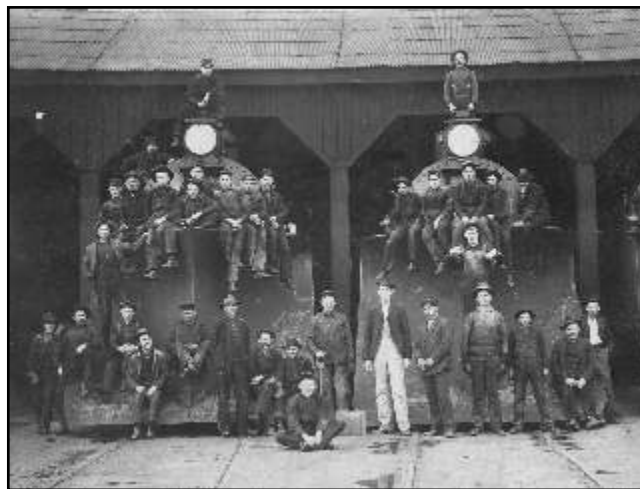
Amazon Smile Fund Raising

We are now part of the Amazon Smile fund raising campaign. We receive a donation to the society based on your purchases. Please feel free to copy and paste the link below and include it in all your emails.

<https://smile.amazon.com/ch/68-0488569>

From the Archives

January Mystery Photo (right): The photo shows two locomotives and roundhouse crew at the Rocklin Roundhouse. The photo was taken in 1905, shortly before the roundhouse was closed and operations moved to Roseville. The young man seated in the foreground is Harry Rasmussen, who by the early 1950's had become an SP engineer on the City of San Francisco passenger trains. Harry played a supporting role in the story of the COSF that was snowbound for several days in 1952, and he wrote a handwritten account of his experiences that week. His first-hand account is featured in the next issue of *Donner Crossings*. *Photo courtesy of Andrew Brandon.*



February Mystery Photo (left): This locomotive shows PG&E markings. Where was the photo taken and where did the locomotive operate before and after PG&E acquired it? *Ken Yeo Collection*

The February meeting program will feature this photo and several others from Ken's collection, along with findings in the historic literature about their possible locations and details. Meeting attendees are invited to participate in a discussion on what seem to be inconsistencies or gaps between some of the photos and published reports.

Accidents/Other Incidents. Last month's entry dated November 22, 1865 reported that derailments had occurred on the new Central Pacific roadbed between Colfax and Auburn due to heavy rains. The problems on the new line continued as shown in this article from the Nevada (City) Transcript dated 25 November.

"THE RAILROAD.—The Central Pacific Railroad was buried for some distance on Wednesday night, to the depth of seven feet by a slide in a deep cut seven miles below Colfax. The Company had no locomotive this side of the slide and on Thursday passengers bound up and down, had to walk seven miles, in going to and from the terminus."

The Nevada (City) Gazette added in its November 27 report: "The newly thrown up embankments, as was expected, have settled, and as the settling is in proportion to the depth of the new made grade, in places one track is a foot or more higher than the other, causing the cars to tilt at an angle threatening an upset. . The cars, of course, are compelled to travel slow, always arriving in Colfax several hours behind time, besides making the trip a disagreeable one to passengers."

Membership Information

Individual Members = \$25.00/yr
Each Additional Family Member = \$5.00/yr

- Monthly Meetings (4th Thursday) and Newsletter
- Member Activities, History Pubs and Field Trips
- Display and Restoration Projects

PSRHS, P.O. Box 1776, Colfax, CA 95713
or join/renew online at www.psrhs.org

Reader comments, additional details, etc., are invited on any newsletter items or photos. Please forward comments, suggestions or information for inclusion in future issues of the newsletter to:

Roger Staab (530) 346-6722 roger.staab@psrhs.org

