

Placer-Sierra Railroad Heritage Society



www.psrhs.org

March 2018 Newsletter

In this issue:

March Meeting and Presentation. Page 2

If You Renew Membership On-line. Page 2

Colfax Railroad Days Update. Page 2

Donner Crossings Issue Mailed. Page 2

Passing Scene. Page 3

Amazon Smile Fund Raising. Page 3

From the Archives. Page 4



*This image is featured in the new book **Railroads of Placer County**, and is this month's mystery photo. See page 4 for details. Photo courtesy of Art Sommers*

Scheduled Events & Notices



Mar 22 PSRHS Board Meeting (tentative) – 5:30pm prior to member meeting

Mar 22 PSRHS Monthly Meeting & Presentation – 7pm
Program – Paul Helman - The Science and History of the
Steam Locomotive Boiler

Future Programs//Events

Apr 26 Bill Oudegeest, The Rails at Donner Summit

May 24 Andrew Brandon, Railroads of Nevada County

Jun 7-10 Pacific Narrow Gauge Conference, NCNG Museum, Nevada City

Sept 15-16 Colfax Railroad Days 2018

*****Remember to Renew your Membership for 2018*****

Monthly Member Meeting 7PM Thursday, Mar. 22nd, Auburn Airport Pilots Lounge

March Program: Paul Helman will present a program titled "Locomotive Boilers and more. If boilers could talk about their family history, what would they say?" He will cover the history of the development of steam boilers and their application on steam driven locomotives. Through time heating water past the boiling point went from an ancient version of a parlor game to powering locomotives with a 6000 horsepower equivalent rating. How did this happen, what were the developments, who were some of the major individuals involved to create this central aspect of modern industrialized society?

Paul is a member of PSRHS and a docent at California State Railroad Museum. He is also a qualified brakeman on excursion trains operated by the museum. Prior to retirement Paul was Site Boiler House Manager for Proctor and Gamble along with other management positions.

February Program Recap: Roger Staab showed some images of PG&E's railroad operations in support of their construction of Spaulding Dam and Drum Forebay and Powerhouse, and increasing the height of Fordyce Dam. He pointed out several "mysteries" his research has uncovered including photo locations and what seems to be gaps between published information and some of the images in our collection. Members of the audience were invited to offer their thoughts about the mysteries or anomalies that were highlighted.

If you Renew your Membership On-line

We are seeing occasional duplicate payments of membership dues for those using the PayPal link on our web site. Our treasure continues to investigate why this is happening for some but not others. In the meantime he suggests that members check their Paypal account if that's how they paid and make sure the system has not processed multiple payments. If so, we can "refund" these extra payments.

Colfax Railroad Days Sept. 15-16, 2018

Colfax Railroad Days is returning in 2018! Fred Abbott, Event Liaison for the City of Colfax, has agreed to provide overall coordination for this year's event. PSRHS volunteers will focus on the railroad-oriented features of the event, specifically coordinating model railroad layouts, providing liaison with UP for displays of railroad equipment, and other railroad-related displays for the two-day event. Preliminary discussions with UP public relations indicate favorable support for providing UP equipment for the event.

Over the next several months we will be laying out detailed plans for the displays. Our members will be asked to volunteer to staff the PSRHS table and Colfax caboose, and to assist members of the public in touring UP's equipment. This is the last railroad-themed event we will host before the major celebrations next spring for the 150th anniversary of completion of the nation's first transcontinental railroad.

Donner Crossings #13

Donner Crossings Issue #13 was mailed March 12 to members who have renewed for 2018 per the latest roster of active members. If you did not receive your copy in the mail but believe you should have, please contact your newsletter editor by replying to the newsletter transmittal email. For those without email my phone number can be found at the bottom of page 4 of the newsletter.

RS



Passing Scene

Repeat Visitor. The January 2015 newsletter featured a visit by this railcar in 2007. The image below of the same car on a return visit was captured in Colfax in October 2015. According to Chris Guenzler's Train Web report on his excursion aboard the car to San Diego in 2007, Canadian National "Burrard" is named after Burrard Inlet, near CN's western terminus of Vancouver, BC. The car was built in 1954 as a Tourist Sleeper with open platform, seven bedrooms, lounge, galley and crew room. It was used on a number of special trains including a tour of Canada by Princess Margaret and the opening of the St Lawrence Seaway by Queen Elizabeth II and Prince Phillip. It was also in the consist of a special train kicking off VIA's blue paint scheme. The car was repainted in 2007 in original CN colors. The Burrard has also been featured on excursion runs on Yolo Shortline Railroad based in Woodland, CA. *Photo by Roger Staab*



Amazon Smile Fund Raising

We are now part of the Amazon Smile fund raising campaign. We receive a donation to the society based on your purchases. Please feel free to copy and paste the link below and include it in all your emails.

<https://smile.amazon.com/ch/68-0488569>

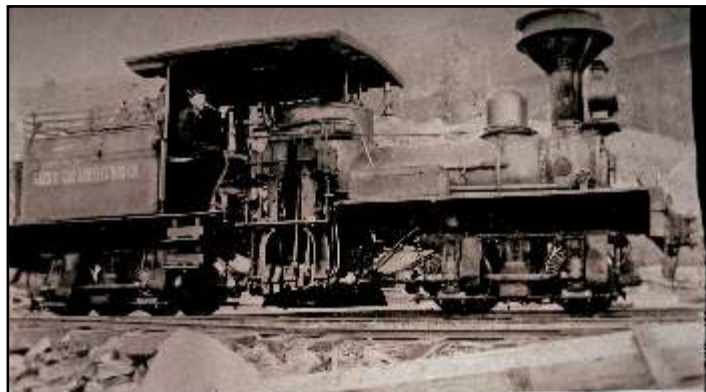


Placer-Sierra Railroad Heritage Society

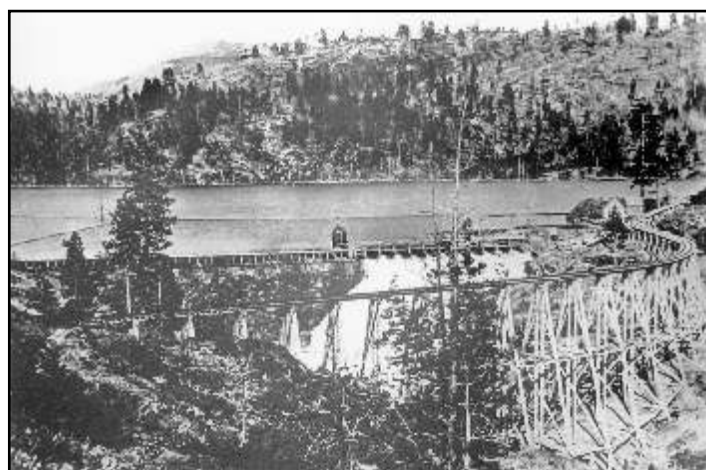
March 2018 Newsletter

From the Archives

February Mystery Photo (right): According to the web site shaylocomotives.com, this photo shows a narrow gauge Shay geared locomotive that was built in 1904 for Birce and Smart logging railroad. It was purchased by PG&E at Lake Spaulding in 1912 from Birce and Smart. In his book Donner Pass John Signor states that this locomotive was used by PG&E to move gravel and other supplies to the Spaulding Dam construction site, but that site was served by a standard gauge spur, not narrow gauge. PG&E logged the area to be flooded by the new Spaulding reservoir so the narrow gauge Shay may have been used for moving logs to the Smart sawmill. *Ken Yeo Collection*



March Mystery Photo (right): Those who have a copy of the new book Railroads of Placer County should recognize this photo. What is the wooden structure, where was the photo taken and approximately what year? For extra credit, what is its tie to Placer County? *Photo courtesy of Art Sommers*



Accidents/Other Incidents. Immense Snow Bank Falls on Rail Crew – Truckee, Cal., April 17, 1938 – A huge snowbank created by heavy winter storms caved in on a Southern Pacific building crew near the mouth of a Sierra tunnel today, killing one man and seriously injuring two others. The crew of 25 was working just above the mouth of Tunnel 11, two and one-half miles east of Donner summit, one of a series on the transcontinental line through the High Sierras. Snow had piled up to a depth of 60 feet or more above the tunnel mouth and the men were clearing it away when a large mass broke away and struck some of the workers as it fell. The body of *** of Norden was removed shortly thereafter from the fallen mass and taken to Colfax, 30 miles distant. The two injured also were removed to Colfax. Railroad officials said the snow mass had blocked westbound traffic for the time being but that eastbound trains would not be affected. *Associated Press story from San Bernardino County Sun, April 18, 1938*

Membership Information

Individual Members = \$25.00/yr
Each Additional Family Member = \$5.00/yr

- Monthly Meetings (4th Thursday) and Newsletter
- Member Activities, History Pubs and Field Trips
- Display and Restoration Projects

PSRHS, P.O. Box 1776, Colfax, CA 95713
or join/renew online at www.psrhs.org

Reader comments, additional details, etc., are invited on any newsletter items or photos. Please forward comments, suggestions or information for inclusion in future issues of the newsletter to:

Roger Staab (530) 346-6722 roger.staab@psrhs.org

