

Placer-Sierra Railroad Heritage Society



www.psrhs.org

January 2021 Newsletter

In this issue:

NO MEETING IN JANUARY. Page 2

PSRHS Live Web Cam Status. Page 2

Your Articles Welcome. Page 2

Passing Scene. Page 3

From the Archives. Page 4



This image of AMTRAK approaching Applegate was captured from the new web cam that has been installed by PSRHS members. See the update and larger photo on pages 2 and 3.

Scheduled Events & Notices



No Meeting in January due to Covid-19 restrictions

As we start a new year and move on from the COVID trials of 2020, we encourage you to renew your membership in PSRHS for 2021 or join PSRHS as a paid member. As soon as conditions permit, we plan to resume our regular schedule of monthly presentations on historic or contemporary operations along the Donner Route, field trips to regional sites, continuation of monthly newsletter articles and historic photos, plus expanded resources on our web site. More web cams are planned so viewers can track rail operations over the route. Thanks for your past and continued support of PSRHS and regional railroad history.



Placer-Sierra Railroad Heritage Society

January 2021 Newsletter

MONTHLY MEETING

There will be NO PSRHS Monthly Meeting in January. Our meetings will not resume until restrictions due to Coronavirus precautions have been lifted. Watch the monthly newsletter for updated status of future meetings.

PSRHS LIVE WEB CAM STATUS

Our new web cam has been LIVE since late December, but intermittent problems feeding through a rural internet provider have caused brief outages in the live-streamed signal. When the signal is lost, the camera has to be reset, which generates a new link address for internet access. Our intrepid volunteer crew members Brendan Compton, Peter Hills, Jim Wood, Paul Greenfield and Bill Yoder have been trying various fixes to make the web cam operation more robust.

Visit our web site www.psrhs.org for the link to the web cam live feed. If the live feed is down, check back later for an updated link to the camera.

Bill Yoder has been developing methods to capture the passage of trains and their time/date stamp. Viewers can “rewind” the You Tube video to the appropriate time to view the train images. Selected images along with their time stamps can be found on the Camera Snapshots page link found below the home page image.

YOUR ARTICLES WELCOME

Your newsletter editor attempts to find articles of interest to include in each issue of the monthly newsletter, but at times such as this month I admit to being tired of researching topics and details, and meeting deadlines. If you have information on an item that may be of interest to our readers you are invited to submit the article to me for inclusion in future issues. My email address can be found at the bottom of page 4.

Topics could focus on historical events/locations or contemporary operations, with lengths varying from a few paragraphs to a page or two. I can edit what you submit, or give me raw material and I can fill in details with further research.

Perhaps some of our railfans could submit articles about your field adventures. Preference is a focus on the Donner Route but other locations and stories are also fair game. Target is to distribute the monthly newsletter by the third Thursday of each month.

Thanks in advance for helping make the PSRHS newsletter a viable document for the coming months.

PRESERVING RAILROAD HISTORY ON CALIFORNIA'S DONNER PASS ROUTE

We are dedicated to researching and documenting the railroad history and contemporary operations along the Donner Pass Route from Roseville to Truckee. Our objectives are met through monthly meetings and presentations, field trips, publications, restoration projects, and community events.





Passing Scene – Westbound AMTRAK on #2 (Eastbound) Track

This image was captured on the PSRHS Applegate webcam on December 30, 2020 (note date and time stamp at upper left corner). Normally the #2 track is used for uphill trains but westbound AMTRAK #5 was using the #2 track on this date. The link to the web cam is posted on our home page www.psrhs.org, and a series of images captured from the web cam can be found on a Camera Snapshots page linked to the home page.



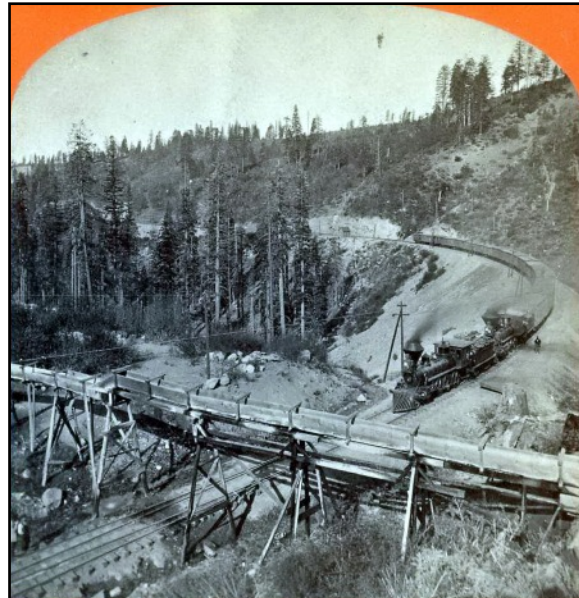
Amazon Smile Fund Raising

We are now part of the Amazon Smile fund raising campaign. We receive a donation to the society based on your purchases. Please feel free to copy and paste the link below and include it in all your emails.

<https://smile.amazon.com/ch/68-0488569>

From the Archives

November Mystery Photo (right): Reilly stereo image #215 shows a tea train near Blue Canyon. Special tea trains and silk trains received high priority on Donner Route runs into the early 1900's. See the article on tea trains in the November 2020 PSRHS newsletter. *PSRHS Collection*



January Mystery Photo (left): Where was this photo taken, and what is underway in the scene? Hint: It is railroad related. *CSU Chico Collection, courtesy of Art Sommers and John Knox*

Accidents/Other Incidents. *San Jose Mercury-News*, 5 Oct 1907 - **WRECK NEAR CAPE HORN.** Dutch Flat, Oct. 4 – An eastbound extra freight train parted in the middle when near Cape Horn yesterday. Three cars were derailed, the track was torn up for more than 300 feet, and the pilot was broken. The accident blocked the main line for three hours. A crew from Colfax cleared the tracks.

Membership Information

Individual Members = \$25.00/yr
Each Additional Family Member = \$5.00/yr

- Monthly Meetings (4th Thursday) and Newsletter
- Member Activities, History Pubs and Field Trips
- Display and Restoration Projects

PSRHS, P.O. Box 1776, Colfax, CA 95713
or join/renew online at www.psrhs.org

Reader comments, additional details, etc., are invited on any newsletter items or photos. Please forward comments, suggestions or information for inclusion in future issues of the newsletter to:

Roger Staab (530) 346-6722 roger.staab@psrhs.org