

# Placer-Sierra Railroad Heritage Society

---



[www.psrhs.org](http://www.psrhs.org)

---

## June 2021 Newsletter

### In this issue:

**NO PSRHS ZOOM PROGRAM IN JUNE.** Page 2

**In Memoriam - Tony Hesch.** Page 2

**Colfax Caboose Open July 3.** Page 2

**NCNG Kiosk Dedication.** Page 2

**Passing Scene - Tribute to Tony Hesch.** Pages 3-4

**From the Archives.** Page 5



*That's Tony Hesch on the right with your newsletter editor preparing for the grand opening of the renovated Colfax Passenger Depot in 2007. See the photo tribute to Tony on pages 3-4. PSRHS collection*

---

## Scheduled Events & Notices



**Jun 24    No PSRHS Zoom Meeting in June**

**Jul 3       Colfax Caboose Open for July 3 Event in Downtown Colfax**

**Jul 22    PSRHS Zoom/In Person Meeting, 7PM. Program TBD**

As we move on from the COVID trials of 2020, we encourage you to renew your membership in PSRHS for 2021 or join PSRHS as a paid member. As conditions permit, we will be hosting presentations on historic or contemporary operations along the Donner Route using Zoom or in-person meetings, offer field trips to regional sites, continue publishing our monthly newsletter articles and historic photos, and expand resources on our web site. More web cams are planned so viewers can track rail operations over the route. Thanks for your past and continued support of PSRHS and regional railroad history.



# Placer-Sierra Railroad Heritage Society

## June 2021 Newsletter

### MONTHLY MEETING

**THERE WILL NOT BE A JUNE PSRHS ZOOM PROGRAM.** We need your suggestions for future programs as well as a location for in-person meetings. We will resume regular meetings soon at a site other than the airport location that is no longer available to us.

**PSRHS Members** – You can help by offering a program topic for future meetings, or by suggesting a topic and presenter. We also invite you to contribute your stories to this monthly newsletter.

**Board Members** – Help make your club more viable with a presentation or article based on your railroad-related field excursions, research or experiences.

### IN MEMORIAM - TONY HESCH

We are saddened to report the passing of long-time PSRHS member Tony Hesch on June 11. Tony was instrumental in PSRHS's completion of two major restoration projects, the Colfax passenger depot and the Colfax Caboose, as well as contributor on several historical narratives prepared by your editor. He was the penultimate volunteer, stepping up to lead both restoration efforts and perform several hands-on tasks where needed to see the projects to completion. A photo tribute to Tony and his work on these projects can be found on pages 3-4 of this newsletter.

### COLFAX CABOOSE OPEN JULY 3

In a joint effort between PSRHS and the Colfax Area Historical Society, the Colfax caboose will be open and staffed by volunteers for the all-day Colfax July 3 event in downtown Colfax. This is an opportunity to promote our organization and inform the public on the nearly forgotten role cabooses played in railroad history. PSRHS will staff a table within the caboose encl-

sure and offer railroad books and memorabilia items for sale. Come join us in Colfax on July 3!

### NCNG KIOSK DEDICATION

Members of the Nevada County Narrow Gauge (NCNG) Railroad Museum in Nevada City held a dedication ceremony on May 22, 2021 for the new information kiosk at the site of the former Nevada City depot. A short section of track was installed at the site enabling operation of the NCNG museum's railbus. Hope is to one day connect this track section to tracks at the nearby museum. A refurbished flat car is also on display at the kiosk location. The event marked the first time rail equipment operated at the depot location since the line shut down in 1942.



*Photo by Elias Funez for the Grass Valley Union*

To visit the kiosk location, take the Sacramento Street off ramp from Hwy 49 approaching Nevada City, then an immediate right onto Railroad Avenue. The kiosk is on the right.

According to the NCNG RR Museum web site, [www.ncngrmuseum.org](http://www.ncngrmuseum.org), the museum is now open Saturdays from 10am-4pm.





### **Passing Scene – Tribute to Tony Hesch**

PSRHS member Tony Hesch served as project manager for both the Colfax Passenger Depot renovation and the Colfax Caboose restoration. But he was more than a project manager, plunging in to perform many of the tasks himself. He especially loved painting as can be seen in some of the photos on this page and page 4. Tony passed away on June 11. These photo collages capture only a glimpse of his many contributions. *Roger Staab photos*

### **Colfax Caboose Project**



---

### **Amazon Smile Fund Raising**

We are now part of the Amazon Smile fund raising campaign. We receive a donation to the society based on your purchases. Please feel free to copy and paste the link below and include it in all your emails.

<https://smile.amazon.com/ch/68-0488569>





### Passing Scene – Tribute to Tony Hesch (continued)

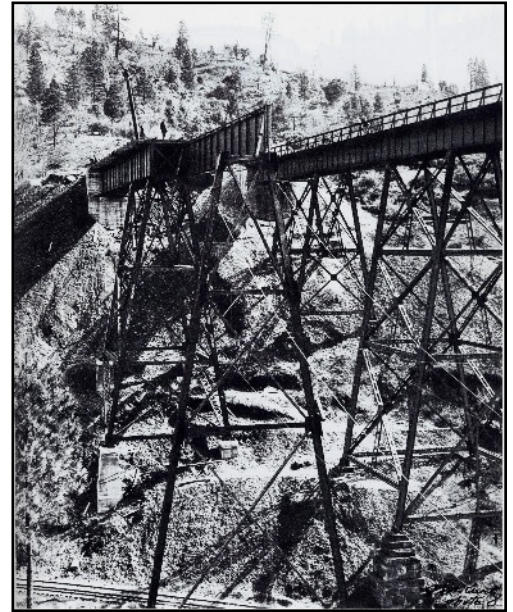
#### Colfax Passenger Depot Project





### From the Archives

**May Mystery Photo (right):** The second steel viaduct is under construction circa 1914 at Long Ravine east of Colfax as part of Southern Pacific's double tracking of the Donner Route. A girder supporting the new bridge contains a plaque with the date 1913. The Nevada County Narrow Gauge Railroad tracks can be seen at the extreme bottom of this image, skirting past the piers under the two Long Ravine viaducts. If you look closely, you will see a third rail in the NCNG tracks. For a brief time the NCNG line moved standard gauge gravel-laden gondolas from the Bear River gravel quarry to Colfax. The cars were then delivered by SP to the PG&E dam construction at Lake Spaulding. *PSRHS Collection*



**June Mystery Photo (left):** Where was this photo taken, what year and what is the significance of the image?  
*D. S. Richter photo, Stan Kistler Collection*

**Accidents/Other Incidents.** *Placer Herald, 2 December 1905. Fifteen Cars Ditched.* A freight train of fifteen cars was ditched at Gold Run early Wednesday morning. It was a very bad wreck, and was not fully cleared until Friday morning. Three hobos were injured, one of whom was brought to the Hospital at Auburn.

#### Membership Information

Individual Members = \$25.00/yr  
Each Additional Family Member = \$5.00/yr

- Monthly Meetings (4th Thursday) and Newsletter
- Member Activities, History Pubs and Field Trips
- Display and Restoration Projects

PSRHS, P.O. Box 1776, Colfax, CA 95713  
or join/renew online at [www.psrhs.org](http://www.psrhs.org)

Reader comments, additional details, etc., are invited on any newsletter items or photos. Please forward comments, suggestions or information for inclusion in future issues of the newsletter to:

[roger.staab@psrhs.org](mailto:roger.staab@psrhs.org)