

Placer-Sierra Railroad Heritage Society



www.psrhs.org

September 2021 Newsletter

In this issue:

PSRHS SEPTEMBER PROGRAM. Page 2

Monthly Meeting Details
(Note new date and location). Page 2

Passing Scene. Page 3

From the Archives. Page 4



This locomotive played a significant role in the history of the Donner Route. See page 4 for details regarding this image from the PSRHS Collection.

Scheduled Events & Notices



- Sep 28** PSRHS Board Meeting, 6PM, Prior to Member Meeting at Veterans Hall
- Sep 28** PSRHS LIVE Meeting, 7PM - Note New Date 4th Tuesday at Veterans Hall
Program – Jim Wood & Roger Staab- Colfax Marble Quarry & Lime Kilns
- Oct 26** PSRHS Member Meeting, 7PM – Program TBD

As we move on from the COVID trials of 2020-21, we encourage you to renew your membership in PSRHS for 2021 or join PSRHS as a paid member. As conditions permit, we will be hosting presentations on historic or contemporary operations along the Donner Route using Zoom or in-person meetings, offer field trips to regional sites, continue publishing our monthly newsletter articles and historic photos, and expand resources on our web site. More web cams are planned so viewers can track rail operations over the route. Thanks for your past and continued support of PSRHS and regional railroad history.



Placer-Sierra Railroad Heritage Society

September 2021 Newsletter

SEPTEMBER PROGRAM

MONTHLY MEETING DETAILS

Note New Day and Location

In-Person Presentation September 28 at 7PM. Also available via Zoom.

Our monthly meeting date is shifting to the **fourth Tuesday** to fit availability of our **new meeting location, Auburn Veteran's Memorial Hall at 100 East St.**

Starting this September monthly meetings will be held at the Auburn Veterans Memorial Hall, 100 East Street, on the 4th Tuesday. A map showing directions to the Memorial Hall meeting location is provided on this page and on our web site. Access to the downstairs meeting room is through the door facing the parking lot which is behind the building.

Veterans Memorial Hall is just SW of the Hwy 49/Grass Valley exit off I-80 in Auburn. From the freeway drive south one block on Hwy 49 to the traffic light at Lincoln Way. Turn right on Lincoln Way, then right on East Street. The hall will be on your left. Parking is behind the building, with one-way traffic clockwise around the building. The entrance to the downstairs meeting room is through the door facing the parking lot.

The Tuesday, September 28th program will be presented live starting at 7PM at the Veterans Hall for those who wish to attend in person. The program will also be available via zoom for those who prefer the zoom format.

Program: PSRHS founding members **Jim Wood and Roger Staab** will present the story of the **Pritchard Marble Quarry and Bear River Lime Kiln**.

The program will discuss the history of these Colfax-area businesses and their dependence on the nearby railroad for transporting their bulky products to distant customers. The changing economics will be explored that led to the transition from quarry to lime kiln and ultimately caused their shutdown. Present-day images will highlight some features of these businesses that remain today at a remote site on private property near Colfax, and efforts underway to preserve the site.

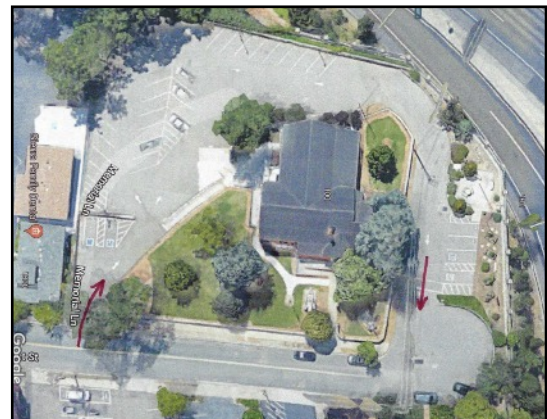
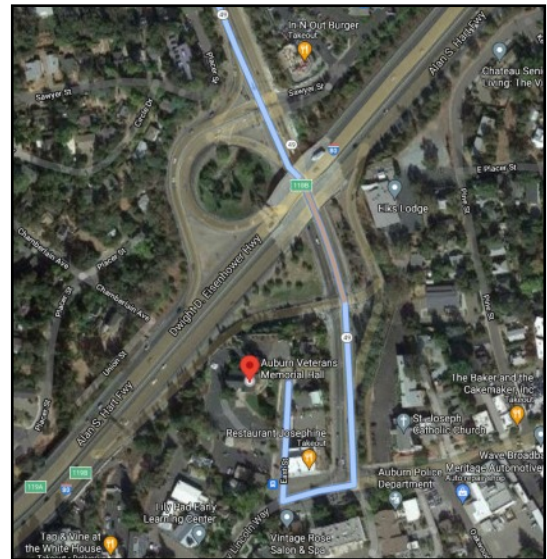
To access the zoom presentation:

<https://us02web.zoom.us/j/9324272808?pwd=L2ltVjdwYkg2ZjcwOE5qTTN6RUFWdz09>

Meeting ID: 932-427-2808

Passcode: 837480

August Program Recap: Phil Sexton presented **Honoring The Work of Giants at Donner Pass**. Phil discussed the historical significance of the Donner Summit area, the important role of Chinese laborers in completing railroad construction, and efforts to preserve the historic sites as a National Historic Landmark.





Passing Scene – Kansas City Southern visits the Donner Route

The photo below was captured on our Applegate web cam in April 2021. It shows Kansas City Southern #4840 in an eastbound Union Pacific freight manifest on its way toward Donner Summit. The engine was likely made available to UP as a pool locomotive. Kansas City Southern has been the subject of merger talks and negotiations for several months, with both Canadian Pacific Railway and Canadian National Railway vying for control of the line. In a Sept. 15 news release, KCS announced the company has terminated the merger agreement with Canadian National and entered into a merger agreement with Canadian Pacific, labeling the acquisition proposal KCS received from CP a “Company Superior Proposal”. Another KCS news release notes “This perfect end-to-end combination creates the first U.S.-Mexico-Canada rail network with new single-line offerings that will deliver dramatically expanded market reach for CP and KCS customers, provide new competitive transportation options, and support North American economic growth.”

This Kansas City Southern locomotive was spotted again September 18 passing through Colfax during Railroad Days on another eastbound UP freight. *PSRHS Web Cam Image*



Amazon Smile Fund Raising

We are now part of the Amazon Smile fund raising campaign. We receive a donation to the society based on your purchases. Please feel free to copy and paste the link below and include it in all your emails.

<https://smile.amazon.com/ch/68-0488569>



Placer-Sierra Railroad Heritage Society

September 2021 Newsletter

From the Archives

August Mystery Photo (right): SP 4000 and 4001 were the first of seventeen 2-8-8-2 MC-1 locomotives ordered by SP specifically for use on the Donner Route. They were put in service in 1909 from Sacramento to Reno, but the smoke and gas they created in Donner's tunnels and sheds were more than crews could tolerate. After several experiments and discussions, the idea of putting the cab in front was chosen. The remaining order was quickly modified to MC-2 and the first cab-forwards were delivered later that year. SP 4001 is pictured here in Colfax in 1910 before being re-assigned to Colton. It was converted to cab-forward class MC-2 in 1928. *PSRHS Collection*



September Mystery Photo (left): Where was this photo taken and by whom? What interesting features can be seen, and what is there today? *PSRHS Collection*

Accidents/Other Incidents. *San Bernardino Sun, 10 December 1964.* "SP Passenger Train Derailed. Emigrant Gap, Calif. A Southern Pacific streamliner with 196 passengers aboard was derailed yesterday near this small mountain community in the rugged granite and timber country of the Sierra Nevada. A woman .. was reported dead, the apparent victim of a heart attack. Two train crewmen suffered minor injuries... Eight of the 17 cars making up the City of San Francisco streamliner left the tracks. Two of the cars were tipped over, one was sideways, the others off the rails but upright. Only one of the derailed cars carried passengers. The others were mail and baggage cars... the derailment was believed to be caused by a dangling steam fitting which had been dragging for at least three miles. The fitting may have snagged onto the tracks... Railroad officials estimated the train was traveling about 30 miles an hour at the time of the accident..."

Membership Information

Individual Members = \$25.00/yr
Each Additional Family Member = \$5.00/yr

- Monthly Meetings (4th Thursday) and Newsletter
- Member Activities, History Pubs and Field Trips
- Display and Restoration Projects

PSRHS, P.O. Box 1776, Colfax, CA 95713
or join/renew online at <https://www.psrhs.org/>

Reader comments, additional details, etc., are invited on any newsletter items or photos. Please forward comments, suggestions or information for inclusion in future issues of the newsletter to:

roger.staab@psrhs.org

