

Placer-Sierra Railroad Heritage Society



www.psrhs.org

August 2022 Newsletter

In this issue:

AUGUST PSRHS MEETING. Page 2

Colfax Railroad Days Sept. 17-18.
Caboose Open - Volunteers Needed. Page 2

Future Programs & Articles. Page 2

Passing Scene. Page 3

From the Archives. Page 4



*Maintenance of Way equipment
caught on camera on the Donner
Route. See page 3*

Scheduled Events & Notices



Aug 23 PSRHS Monthly Meeting, 7PM – Program – Roger Staab
– 1925's Summit Tunnel #41 and Related Norden Concrete Sheds

Sep 17-18 Colfax Railroad Days – 10am-5pm each day – Volunteers Needed
– Colfax Caboose Open & Staffed by Colfax Historical Society & PSRHS

Sep 27 PSRHS Monthly Meeting, 7PM – Program TBA

Jun 4 - Sep 3 Placer County Heritage Trail Tour of Museums.
<https://www.placer.ca.gov/7375/Heritage-Trail>

Please consider joining PSRHS or renewing membership for 2022
See the box at the bottom of page 4 for details. Thank you for
supporting our railroad history preservation activities.

Preserving Railroad History on the Donner Pass Route



Placer-Sierra Railroad Heritage Society

August 2022 Newsletter

AUGUST PSRHS MEETING

Tuesday, Aug. 23, 7PM,

Auburn Veterans Memorial Hall

August Program: Roger Staab will show photos and discuss **1925's Summit Tunnel #41 and Related Norden Concrete Sheds**, part of Southern Pacific's double-tracking of the route from Emigrant Gap to Andover. The program will be part encore presentation of images from a slide show Ken Yeo gave to PSRHS in April 2006 on the Norden Concrete Sheds, but will be updated with details of Tunnel 41 relevance, as well as new details on the Norden construction. Chuck Spinks discovered the additional information in an article that appeared in the March 23, 1926 issue of Western Railroad Construction News.

The program will be presented live at the Auburn Veterans Memorial Hall. See our web site for directions.

July Program Recap: Scott Inman provided interesting photos and narration of the Great Western Steam Up held in Carson City July 1-4. An impressive array of historic railroad equipment was displayed, all captured and discussed by Scott.

He also gave an update on the **Southern Pacific Railroad History Center** planned for Rocklin that will feature a visual history of regional Southern Pacific operations, a model layout of the route from Sacramento to Salt Lake City, and a research library containing Southern Pacific Company historic documents, photos and videos. A site has been chosen between Rocklin and Lincoln and fund-raising is underway to complete construction of a building on the site to house the center.

Finally Scott discussed the planned annual meeting of the Railroad & Locomotive Historical Society in Reno/Sparks May 16-20, 2023. He invited PSRHS to participate by sponsoring and perhaps hosting a planned field trip to Donner Summit for event attendees.

Mark your calendars for the May 2023 event and for possible volunteer opportunities to help PSRHS host the Donner Summit tour.

COLFAX RAILROAD DAYS

SEPTEMBER 17-18, 2022

COLFAX CABOOSE OPEN

****VOLUNTEERS NEEDED****

Colfax Railroad Days is coming soon. This is the one railroad-related event that PSRHS coordinated for many years up to and including 2015. Since then our role has been one of support and sharing of information, primarily through staffing the Colfax caboose, relating the caboose story and the history of the Donner route.

Volunteers are needed to staff the caboose for 2 hour segments on both days. Swend Miller of the Colfax Historical Society coordinates volunteer assignments. If you can offer 2 or more hours to support this effort, please contact Swend at

swendm@icloud.com

Two volunteers are needed for each shift to answer questions, provide general information about the route and PSRHS activities, and help children safely enjoy the view from the cupola.

FUTURE PROGRAMS & ARTICLES

HELP!!!! Your board members, program director & newsletter editor are not magicians. The programs and articles you enjoy seeing each month come from diligent searching of archival records, old newspapers, phone calls and cajoling to get interesting information to you in the newsletter or monthly meetings.

You Can Help! Surely there is some article you have read, a site you have visited in person or on-line, interesting stories you have heard, or perhaps a person you know who could share information in a PSRHS program or news item. Preference is given to railroad-ing on the Donner route, but regional items of interest are also fair game, even non-railroad items.

Contact Chuck Spinks, Roger Staab or a board member if you have something to contribute. We can help package your information into a format for presentation.





Passing Scene – Web Cam Image

In the category of you never know what might show up on the Donner mainline, this image was captured May 4 from our Applegate webcam by Bill Yoder. Bill didn't report whether the equipment was part of a group of maintenance of way equipment or out on a solo ride, but it looks to be on its own. It is on the eastbound track likely heading to or from a site undergoing track maintenance.



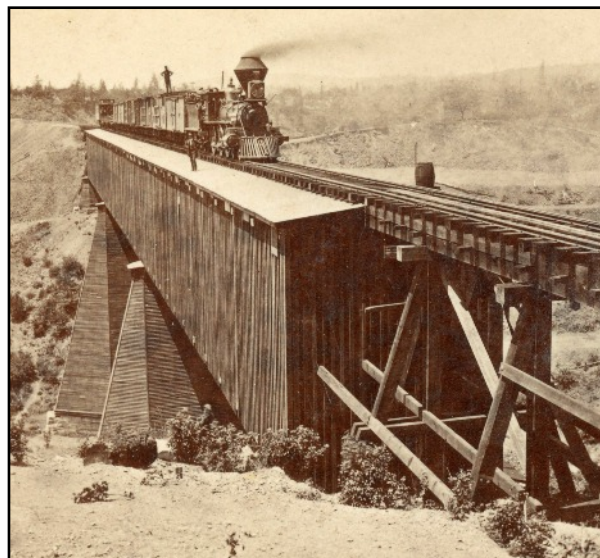
Amazon Smile Fund Raising

We are now part of the Amazon Smile fund raising campaign. We receive a donation to the society based on your purchases. Please feel free to copy and paste the link below and include it in all your emails.

<https://smile.amazon.com/ch/68-0488569>

From the Archives

July Mystery Photo (right): This view of the original Long Ravine wooden bridge east of Colfax shows an eastbound train crossing the bridge on its way toward Cape Horn. The photo was taken after 1876 because the fill curving to the left beyond the bridge used to be a wood trestle before it was filled in in 1876. The August 2020 and February 2017 PSRHS newsletters show this scene before the trestle was filled in. *Reilly Photo, PSRHS Collection.*



August Mystery Photo (left): Where was this photo taken and why does it appear in a newsletter devoted to railroad history and scenes? *Roger Staab photo.*

Accidents/Other Incidents. *Auburn Journal, Aug. 19, 1915* – **Accidental Death** – “C.L. Richardson, a dining car inspector of the Southern Pacific, was found in an unconscious condition along side the railroad track at Blue Canyon last Friday night. He died while being taken to the railroad hospital in Sacramento. It was first thought that he met death through foul play ... (but) The investigation showed ... he had completed his duty of inspecting the dining car when he evidently opened the door on the vestibule of one of the tourist cars and was standing on the steps looking out of the door, when his head came in contact with an upright of what is known to railroad men as a “ticker”. The “ticker” is used as a warning to men on top of trains that the snowsheds are about to be entered.”

Membership Information

Individual Members = \$25.00/yr
Each Additional Family Member = \$5.00/yr

- Monthly Meetings (4th Tuesday) and Newsletter
- Member Activities, History Pubs and Field Trips
- Display and Restoration Projects

PSRHS, P.O. Box 1776, Colfax, CA 95713
or join/renew online at <https://www.psrhs.org/>

Reader comments, additional details, etc., are invited on any newsletter items or photos. Please forward comments, suggestions or information for inclusion in future issues of the newsletter to:

roger.staab@psrhs.org

