

Placer-Sierra Railroad Heritage Society



<https://www.psrhs.org>

January 2024 Newsletter

In this issue:

JANUARY MEETING PROGRAM. Page 2

Election of Board Members. Pages 2 & 5
(Please Read)

Passing Scene. Page 3

From the Archives. Page 4



*What is unique about this image captured recently on our PSRHS Applegate web cam?
See page 3. Image courtesy of Bill Yoder*

Scheduled Events & Notices



- Jan 23** PSRHS Monthly Meeting and Program, 7PM; Program – Mike Lynch –
– History of Bowman - See Page 2
- Feb 27** PSRHS Monthly Meeting and Program, 7PM; Tentative Program –
Lake Tahoe Railway (Narrow Gauge) and Its Transition to
SP's Lake Tahoe Branch (Standard Gauge)
- Mar 26** PSRHS Monthly Meeting and Program, 7PM

**Reminder: Time to renew your PSRHS membership if you have not
already done so. Renew by mail or on our web site using PayPal**

Your annual PSRHS membership helps fund purchase of historic photos, publication
of railroad history documents, field trips, and other historic preservation activities.

Preserving Railroad History on the Donner Pass Route



Placer-Sierra Railroad Heritage Society

January 2024 Newsletter

PSRHS MONTHLY MEETING **JANUARY 23, 7PM**

January Program: We have all driven by Bowman on I-80 just east of Auburn. Nothing much there but railroad tracks, a school and a few businesses. For our January program **Mike Lynch** will tell us about the rich history of Bowman, touching on both its railroad and non-railroad past. (See photo on page 4)

Mike worked for California State Parks, retiring as Park Superintendent for Auburn State Recreation Area. He is author or co-author of nine books with emphasis on State Parks and Auburn area history. His latest book on Bowman history was extensively researched by Mike and his three co-authors.

Our meetings are open to all who are interested. See our web site for updates on future meeting topics and directions to the meeting location.

November Program Recap: Attendees enjoyed a video of an early AMTRAK train traversing Donner on a snowy Christmas Eve and Day 1971. Much of the footage was shot from on-board by Bob Morris, while standing on the open vestibule between cars. The video was found among items donated to the society.

ELECTION OF BOARD MEMBERS

Each year the terms of three of our nine board members expire. Members attending the January meeting will vote on filling these three positions. This year an additional board member will need to be appointed to fill the soon-to-be vacant Treasurer position.

Your PSRHS Board Needs You **Please Consider Getting Involved**

The PSRHS Board of Directors consists of 9 individuals who meet periodically to steer the direction of the society and ensure that all requirements are being met to maintain our non-profit status. Each board member

serves for a 3-year term. The terms are staggered so every year 3 of the positions are either renewed or filled with someone else by vote of Society members.

This year the Society is faced with a double whammy – three of the positions that expired at the end of 2023 are current officers, and a fourth key position, our current treasurer, will become vacant this spring.

Because of its significance, let's first look at the Treasurer position. Peter Hills, who has served the society as treasurer the past several years, has announced that he will be moving out of state this spring. As treasurer, he tracks all the society's income and expenditures as required by law for non-profits, pays bills, files the appropriate forms with the state and IRS each year, and reports our financial status to the board and Society membership. Peter will be available for several months to help transition someone into this position. Although his board position did not expire in 2023, it is imperative that the board appoints someone in January to the treasurer position to benefit from Peter's expertise before he moves.

Thus PSRHS has four board positions that need to be filled this January -- our current President, Vice President, Secretary and Treasurer,. We will know by the January meeting if incumbents Chuck Spinks, Don Anderson and Shirley Racine wish to be reappointed to their board positions. Even if an incumbent wishes to be reappointed, any paid member of the society can run for a vacancy on the board.

The officers of the society are determined by a vote of the board members after the elections each year.

- The President presides over society meetings, calls board meetings and sets the agendas, and represents the society at other meetings and events.
- The Vice President chairs meetings in the president's absence. The Vice President also serves as program chairman, coordinating speakers and topics for monthly meetings.

Continued on page 5



Passing Scene - AMTRAK Double-Double in Colfax

Those of us living near the railroad tracks get treated to the occasional unique view of railroad operations. On January 7 eastbound and westbound AMTRAK #5 & #6 met in Colfax. This happens occasionally as their scheduled times in Colfax are less than an hour apart. This time, though, as #5 began clearing the Grass Valley Street crossing, the view from my deck gradually revealed more and more cars on #6. Final tally – 4 locomotives followed by 5 passenger cars, then a single baggage car, followed by 7 (my count) or 8 (Jim Wood's count) more passenger cars. Each section included a dining and observation car. Apparently #6 was canceled on January 6, leaving two train sets in Emeryville to make the combined January 7 eastbound run.



*Upper Photo by Roger Staab
Note baggage car visible
through fork of tree*



*Image from PSRHS Applegate
Web Cam captured by Bill Yoder*

Membership Information

Individual Members = \$25.00/yr
Each Additional Family Member = \$5.00/yr

- Monthly Meetings (4th Tuesday) and Newsletter
- Member Activities, History Pubs and Field Trips
- Display and Restoration Projects

PSRHS, P.O. Box 1776, Colfax, CA 95713
or join/renew online at <https://www.psrhs.org/>

Reader comments, additional details, etc., are invited on any newsletter items or photos. Please forward comments, suggestions or information for inclusion in future issues of the newsletter to:

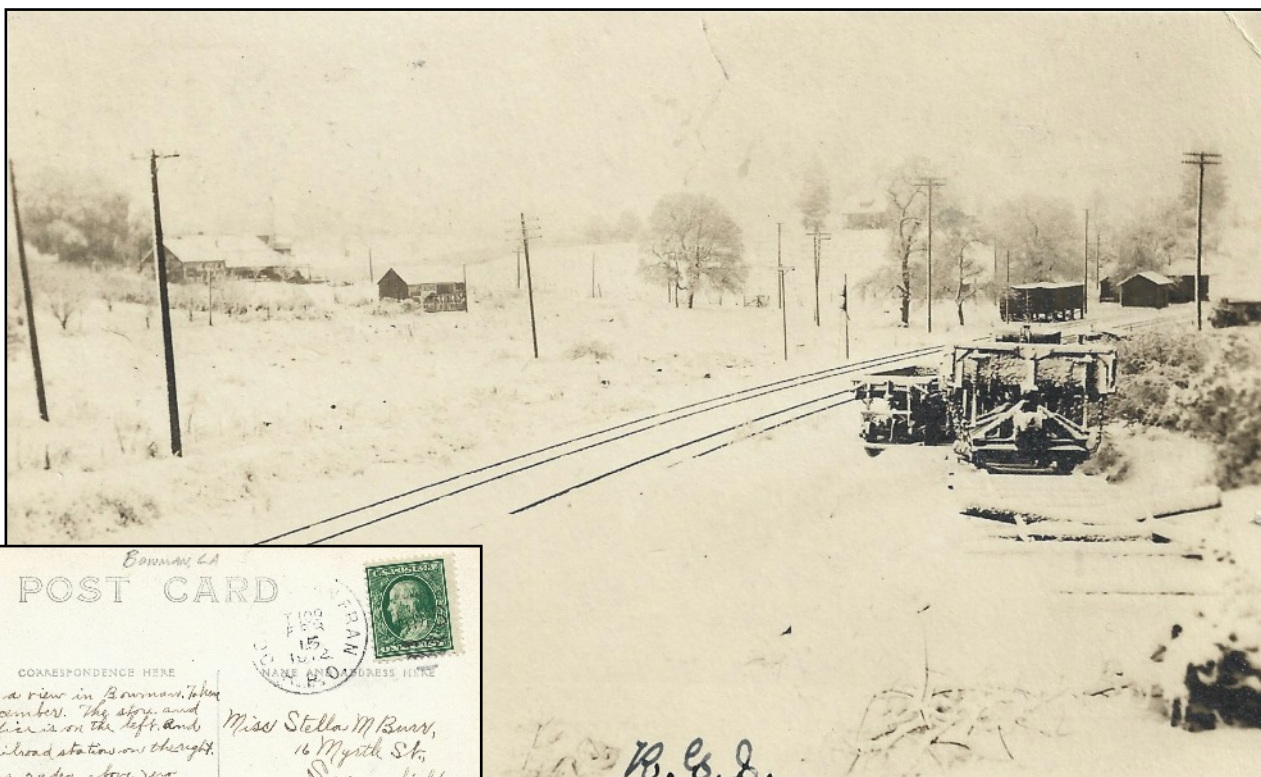
roger.staab@psrhs.org



From the Archives - Early View of Bowman

This postcard appears to be postmarked Feb. 15, 1912. The handwritten note on the back reads: "This is a view in Bowman. Taken in December. The store and post office is on the left and the railroad station on the right. It was 28 deg above zero when the snow was on the ground. About 100 miles from here (it is in Calif) it gets from 10 to 40 below zero. So you see Calif has some cold places. RGS."

Our January program by Mike Lynch on Bowman history may shed some light on the details shown in this early postcard image. *PSRHS Collection/Jim Wood*



Accidents/Other Incidents. *Placer Herald, April 13, 1935.* "Terrible Railroad Accident – Eleven men lost their lives in a railroad accident near Roseville Monday, due to the terrific storm. They had been repairing a washout between Roseville and Lincoln when their motor rail car was struck by a gravel train. The train was rushing ballast to a wash repair job on the main line of the Southern Pacific between Roseville and Lincoln and the workers were returning to Roseville Monday evening. Ten were killed outright ... According to stories of eye-witnesses and a partial investigation by Coroner Elliott Broyer of Roseville, the workmen, who had been employed all day repairing the washout on the main line of the Southern Pacific, were returning to Roseville at the time of the accident. The rock train was being backed up from Roseville to the scene of the washout. The men on the work train failed to see the approaching train until it was on them. Only two or three had time to jump to safety."



Election of Board Members - Contined from Page 2

- The Secretary prepares and distributes minutes of the board meetings. Non-profits are required to conduct and document at least one board meeting each year. The Secretary documents all discussions and actions taken by the board on issues pertinent to the Society's activities, including changes to our by-laws.
- As mentioned earlier, the Treasurer tracks Society income and expenditures, makes deposits to the checking account and pays bills, files appropriate state and federal forms each year, and reports financial status to members.

This year is proving to be a critical time for **your** Society. Please consider getting involved as a board member and perhaps filling one of the critical positions outlined above.

Your PSRHS Board of Directors Needs You.

